

HH Metal | *All Metals Decorative Solutions.*

Company Profile

What We Do

➡ Pergola

A metal pergola is an elegant outdoor structure that provides shade and enhances outdoor spaces.



➡ Louvers

Metal louvers are adjustable slats that control light, air, and privacy while enhancing building aesthetics.



➡ Cladding

Metal cladding is a durable exterior covering that enhances building protection and visual appeal.



➡ Mashrabya

A metal mashrabya is a decorative screen that offers privacy while allowing light and air to flow through.



➡ Gates & Fences

Metal gates and fences provide security, privacy, and a stylish boundary for properties.



➡ Balustrades

Metal balustrades are protective railing systems that enhance safety and add elegance to stairways and balconies.



➡ Handrails

Metal handrails provide support and safety while adding a sleek, modern touch to stairs and ramps.



➡ Garage Doors

Metal garage doors offer security, durability, and a modern aesthetic for residential and commercial spaces.



About Us

➡ HH-Metal Intro

- » About HH-Metal
- » Our Vision
- » Our Mission
- » Our Expertise
- » Why Choose HH-Metal?

More Info

- ➡ Our Projects
- ➡ Our Machinery
- ➡ Fiber Laser Machine
- ➡ Approved By
- ➡ Organizational Chart
- ➡ Our Locations
- ➡ Contact Details

Pergolas

HH-Metal aluminum pergolas with a sleek and minimalist design in round, square, and rectangular sections. Ideal for outdoor spaces, these pergolas enhance the aesthetics of balconies, gardens, and patios.



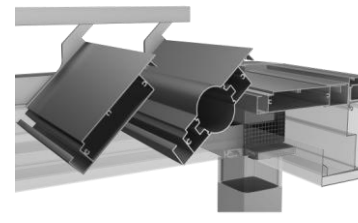
➡ Bioclimatic



➡ Adjustable Solar Shading & Rotating Louvers



➡ Minimal Design



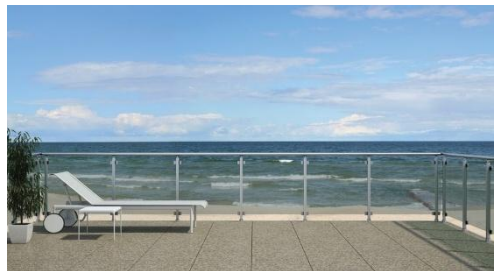
➡ Fixed Pergola System



Balustrades/Railings

HH-Metal aluminum railings with minimal design and in round, square and rectangular sections.
Suitable for balconies and stairs and ideal for residences as well as hotel facilities.

➡ Minimal Design



Gates & Fencing

HH-Metal gates and fencing feature a minimalistic design available in round, square, and rectangular sections. These durable, high-quality gates and fences are perfect for both residential properties and hotel facilities.



Smart multiform Gates & Fencing system



Sections

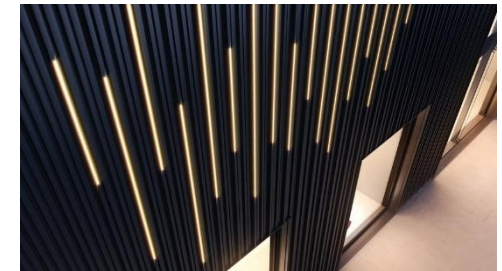
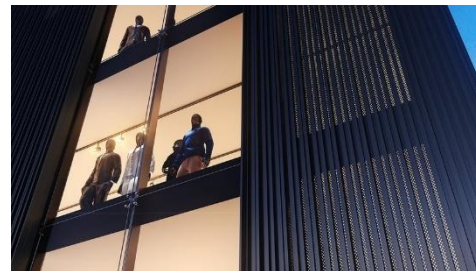
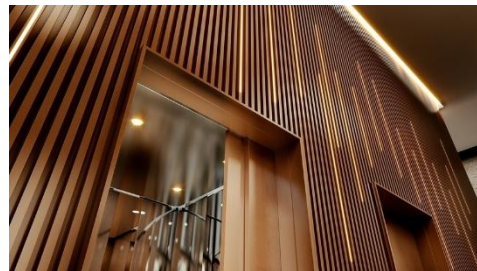


Cladding System

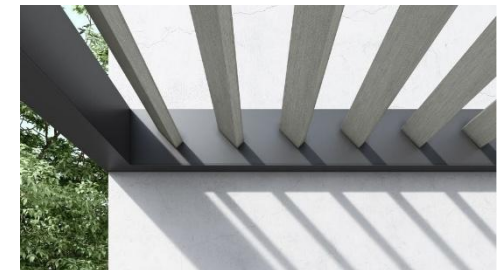
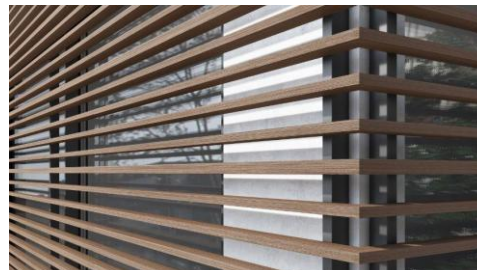
HH-Metal aluminum cladding systems featuring a modern, minimalist design. Available in various shapes and sizes, including square, rectangular, and custom options.



➡ Smart Barcode Cladding

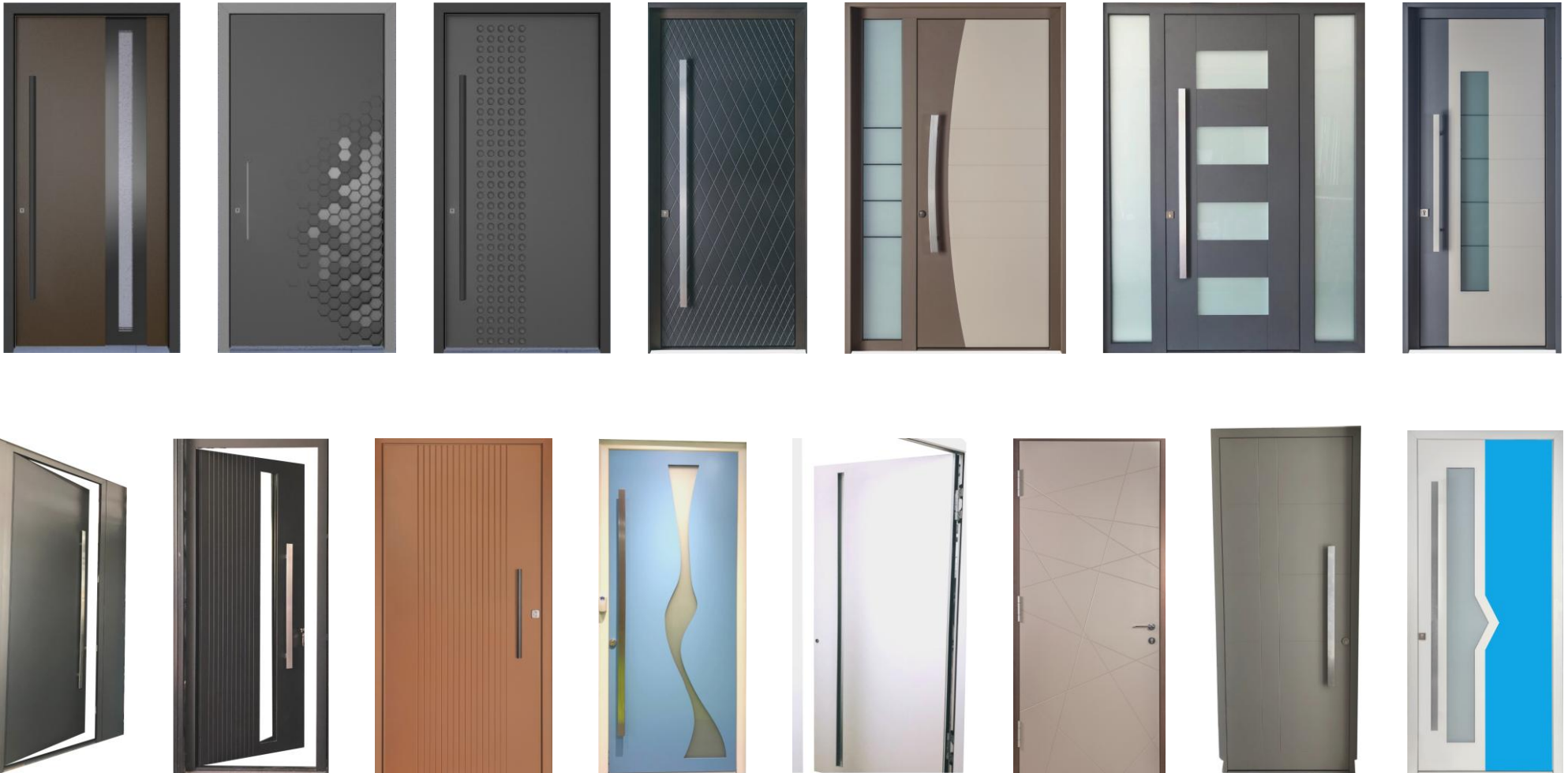


➡ Aluminium Profiles



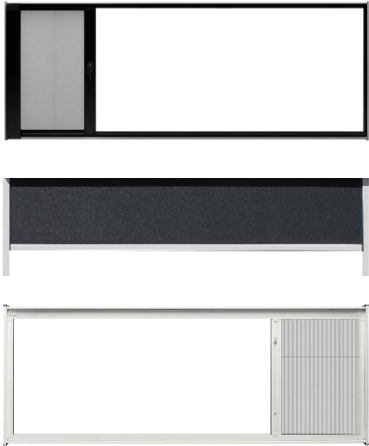
Main Entrance Doors

HH-Metal main entrance doors are stylish and durable, designed for both functionality and visual impact. Available in various styles, they provide easy access while enhancing the building's aesthetic.



Fly Screens

As with our HH-Metal doors, our Fly Screens are designed to seamlessly combine functionality with visual appeal. Crafted for durability and ease of use, these screens offer a reliable solution for keeping insects at bay while enhancing airflow and natural light.



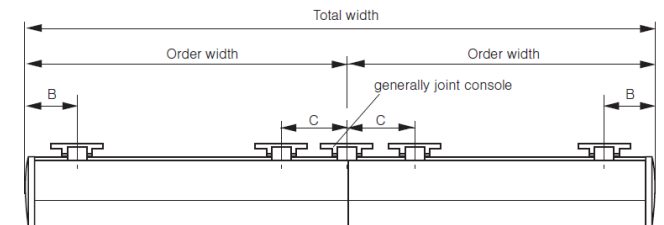
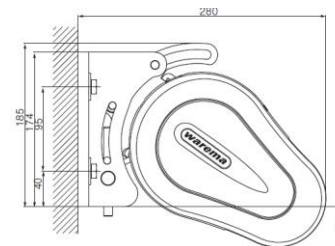
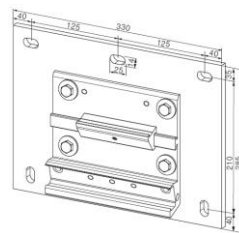
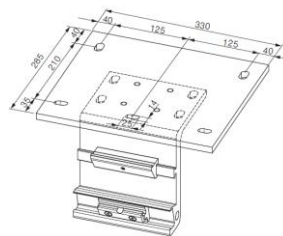
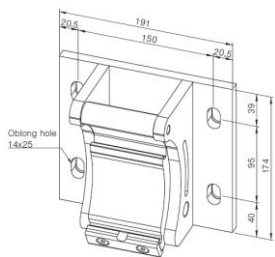
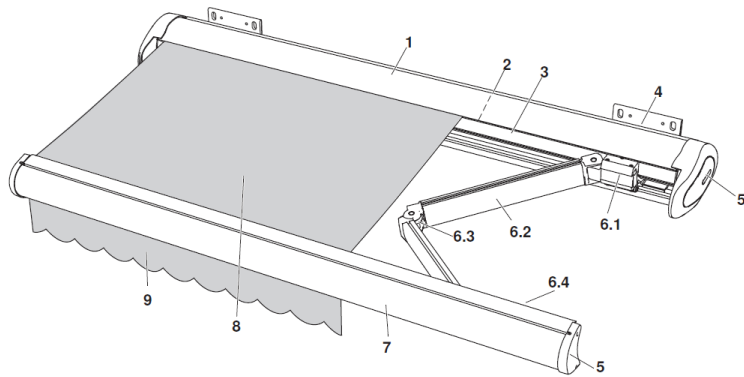
Shading System

HH-Metal aluminum shading systems designed with a minimalist aesthetic, available in a range of shapes and sizes including square, rectangular, and custom configurations.



Cassette Awning

HH-Metal cassette awnings feature a minimalist aluminum design, available in square, rectangular, and custom configurations for a sleek, integrated look.



Our Suppliers



Our Projects



Project: HH023 – Discovery Dunes
Dubai South
Consultant: Olsen and Partners
Year: 2025
Scope of Work: Greeter & Comfort Station



Project: HH029 – Al Jubail Island, AUH
Consultant: POOL Engineering
Year: 2025
Scope of Work: Mashrabya & Metal Work



Project: HH004 – Nad Al Sheba 3, Dubai
Consultant: Designer East
Client: Private
Year: 2025
Scope of Work: Car Parking Pergola/Shades



Project: HH013 – JVC, Dubai
Consultant: Emirates Pearl
Year: 2025
Scope of Work: Pergola



Project: HH007 – Al Awir, Dubai
Consultant: Designer East
Client: Suhail, Saeed & Hamda
Year: 2025
Scope of Work: Metal & Decorative work



Project: HH008 – Jumeirah, Dubai
Consultant: Mivido Factur
Client: Private
Year: 2025
Scope of Work: Metal & Decorative work



Project: HH0010 – Al Awir, Dubai
Consultant: Designer East
Client: Suhail
Year: 2025
Scope of Work: Pivot Door



Project: HH011 – Jumeirah, Dubai
Consultant: Mivido Factur
Client: Private
Year: 2025
Scope of Work: Metal & Decorative work



Project: HH026 – District 1, Dubai
Consultant: MJU Group
Year: 2025
Scope of Work: Mashrabya



Project: HH027 – District 1, Dubai
Consultant: Designer East
Year: 2025
Scope of Work: Metal & Decorative work



Project: HH028 – District 1, Dubai
Consultant: MJU Group
Year: 2025
Scope of Work: Mashrabiya



Project: HH009 – Damac Hills 2 Dubai
Consultant: Home Harmony
Year: 2025
Scope of Work: Pergola



Project: HH002 – Nad Al Sheba, Dubai
Consultant: Designer East
Client: Muzibur Rehman
Year: 2025
Scope of Work: Aluminium Work



Project: HH030 – LL037 Villa 22
Consultant: Luxland Landscapping
Year: 2025
Scope of Work: Vertical Garage Door

We currently have several exciting projects underway, demonstrating our expertise in delivering high-quality metal decorative solutions.

➡ **HH-Metal Pergolas**



Aluminium Pergola

Lightweight, corrosion-resistant, and low-maintenance pergolas made from aluminum, ideal for long-lasting outdoor structures.



Winter Garden Pergola

A Winter Garden System is an enclosed, climate-controlled space made from aluminum allowing year-round use by protecting from the elements while letting in natural light.



Customizable Pergola

Offering personalized metal pergola designs to fit specific aesthetic and functional needs.



Retractable Bioclimatic Pergola

A Retractable Bioclimatic System is an adjustable outdoor structure made of aluminum with a retractable roof and adjustable slats, allowing you to control sunlight, shade, and ventilation

➡ Outdoor System



Main Gates

Main Gates are sturdy, secure entryways made from metal or aluminum, designed to provide privacy, security, and curb appeal to residential or commercial properties.



Metal Fences

Metal Fences are strong, durable barriers made from materials like aluminum or steel, offering security, privacy, and a stylish look for any property.



Creative Balustrades

Creative Balustrades are stylish, custom-designed railings made from metal or aluminum, enhancing safety and adding a unique, decorative touch to staircases, balconies, and terraces.



Vertical System

Vertical System is a modern architectural solution using metal or aluminum panels to create a sleek, space-saving design for garage doors.

➡ Metal Works



Cladding

Enhance your building's appearance and durability with our premium metal cladding. Designed for aesthetics and protection, our cladding systems provide a modern look, weather resistance.



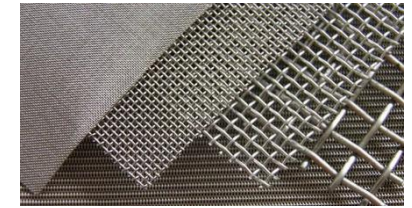
Louvers

Our custom-designed louvers combine style and functionality, offering ventilation, privacy, and sun control while enhancing your building's modern architectural look.



Mashrabya

Experience the perfect blend of tradition and modern design with our custom metal Mashrabya screens.



Metal Mesh

Our high-quality metal mesh systems offer a sleek, contemporary look with strength and functionality. Ideal for facades, partitions, and decorative features.



Facade & Ceilings

Transform your spaces with our premium facade and ceiling systems. Designed for elegance, durability, and performance, they enhance architectural appeal while providing superior finishing, insulation, and long-lasting protection.



Decorative Metal

Add sophistication and style to any space with our custom decorative metal designs. Perfect for facades, interiors, and feature elements, our solutions combine creativity with durability.



Motorized Louvers

Achieve smart control and modern elegance with our motorized louvers. Designed for convenience and efficiency, they enable automated airflow, light, and privacy adjustments, combining functionality.



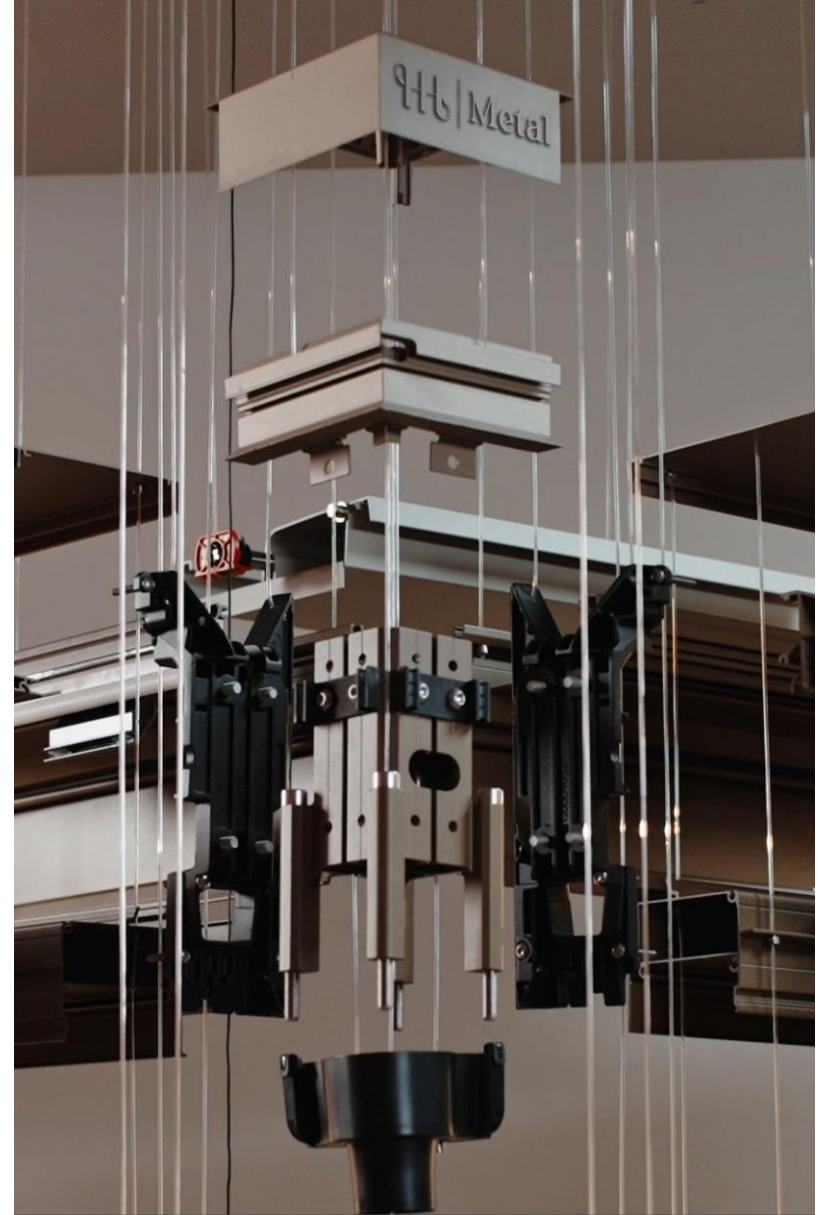
Motorized Screens

Enhance comfort and control with our advanced motorized screens. Designed for smooth automation, they provide shade, privacy, and protection.

About HH-Metal

HH-Metal, a sister concern of the esteemed Home Harmony, stands at the forefront of precision-engineered outdoor and architectural metal solutions. Born out of a commitment to elevate outdoor spaces through innovation, design, and durability, HH-Metal has carved a niche in delivering high-quality metalwork and structural solutions across residential, commercial, and industrial sectors.

Rooted in the trusted legacy of Home Harmony, HH-Metal extends the brand's ethos of quality, craftsmanship, and customer centricity while introducing a focused specialization in metal and fabrication excellence.



Our Vision

*At **HH-Metal** by **Home Harmony**, our vision is to be a leading force in the evolution of architectural metalwork in the U.A.E. and beyond. We aspire to redefine the standards of design, durability, and innovation in the metal fabrication industry, delivering solutions that not only meet the demands of modern architecture but also inspire it.*

Rooted in Dubai's dynamic and forward-thinking landscape, we are committed to excellence, sustainability, and craftsmanship. Our goal is to create lasting impressions through precision-engineered metalwork that elevates spaces, empowers creativity, and reflects the future of construction and design.



Our Mission

*At **HH-Metal** by **Home Harmony**, our mission is to deliver high-quality, innovative metal solutions that enhance the functionality and aesthetics of modern architecture. We are committed to delivering exceptional craftsmanship, advanced fabrication techniques, and personalized services tailored to the unique needs of every client.*

Driven by integrity, precision, and a passion for design, we aim to contribute to the growth of Dubai's architectural landscape by transforming metal into art one project at a time.

Our commitment is to exceed expectations, build lasting relationships, and bring visionary ideas to life with excellence and efficiency.



Our Expertise

We are proud to offer a diverse and comprehensive portfolio that merges modern technology with timeless design, including:

Pergola

Louvers

Cladding

Mashrabya

Gates & Fences

Balustrades

Handrails

Garage Doors



Outdoor Living & Architectural Enhancements

*At **HH-Metal** by **Home Harmony**, we specialize in transforming outdoor spaces into sophisticated, functional environments through premium metalwork and architectural enhancements. Our team combines innovative design with precision craftsmanship to create customized solutions that elevate the beauty, usability, and value of your property.*

From modern pergolas, metal-clad outdoor kitchens, and custom facades to sleek railing systems and unique architectural features, we bring your vision to life with durability and style. Every project is a harmonious blend of aesthetics and performance, engineered to withstand the elements and designed to inspire.





Personalize your
Unique HH-Metal



Savor the Outdoor
Experience



Pergolas

Custom-designed aluminium and steel pergolas for shade, aesthetics, and comfort.



Car Parking Shades

Durable, stylish, and functional shade solutions for residential and commercial needs.



Car Parking Shades

Durable, stylish, and functional shade solutions for residential and commercial needs.



Car Parking Shades

Durable, stylish, and functional shade solutions for residential and commercial needs.



Car Parking Shades

Durable, stylish, and functional shade solutions for residential and commercial needs.



Gates & Fences

Decorative and secure designs that blend privacy with elegance.



HH Metal



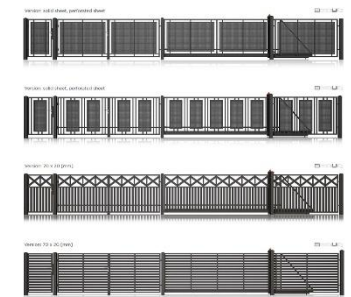
HH Metal



HH Metal



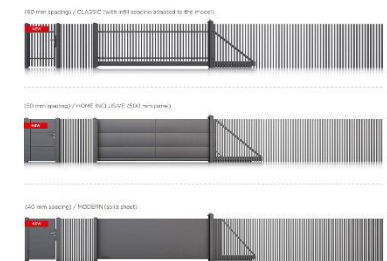
HH Metal



HH Metal



HH Metal



Creative Balustrades

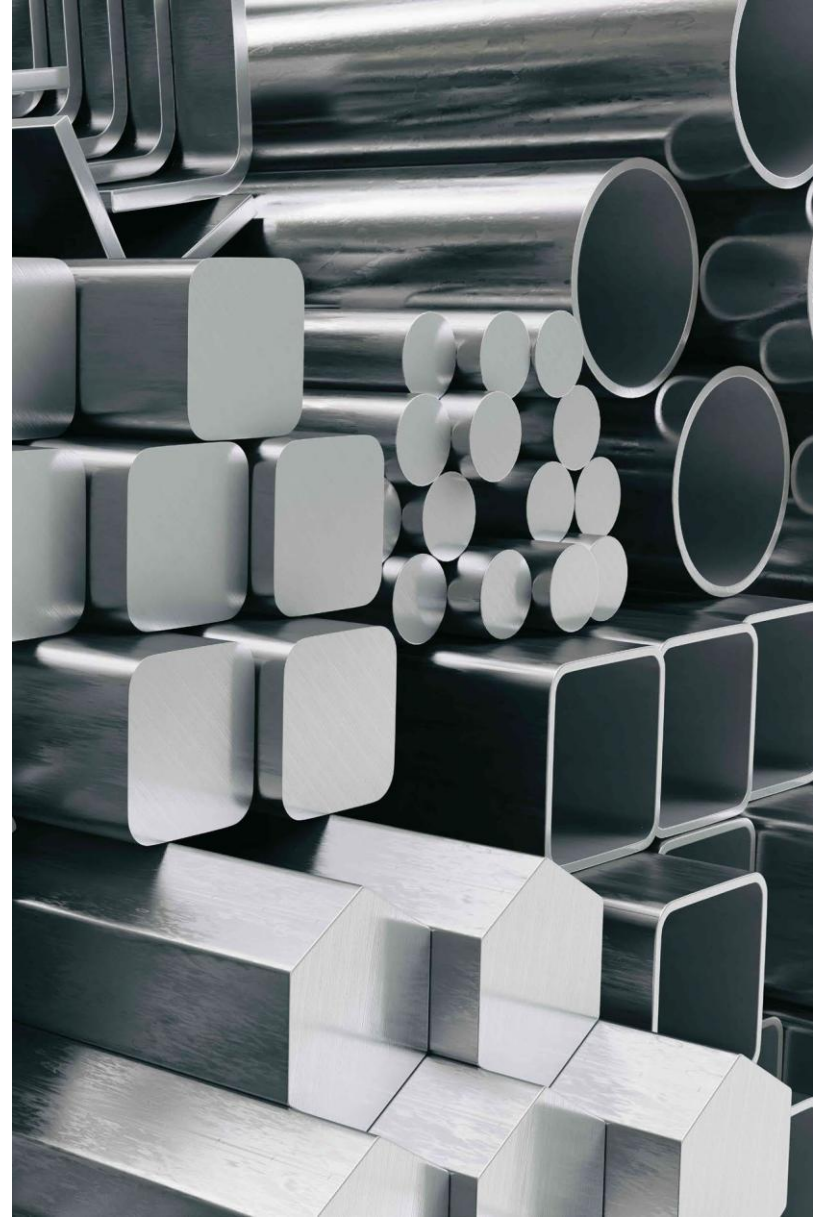
Elegant balustrades that blend safety with style, redefining spaces with modern design.



Metal Solutions & Fabrication

HH-Metal by **Home Harmony** delivers high-quality, custom metal solutions tailored to meet the demands of modern architecture and design. With a focus on precision engineering and superior craftsmanship, we specialize in the fabrication of bespoke metal components for residential, commercial, and architectural applications.

Our capabilities include structural and decorative metalwork, gates, railings, façades, canopies, and more crafted from premium materials like stainless steel, aluminium, and galvanized steel. From concept to installation, we provide end-to-end solutions that combine strength, functionality, and refined aesthetics.



Expanded Metal Sheets & Perforated Screens

Engineered for performance, aesthetics, and thermal efficiency.

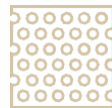
Ideal for decorative facades, privacy panels, and airflow management.



Laser Jet
Cutting



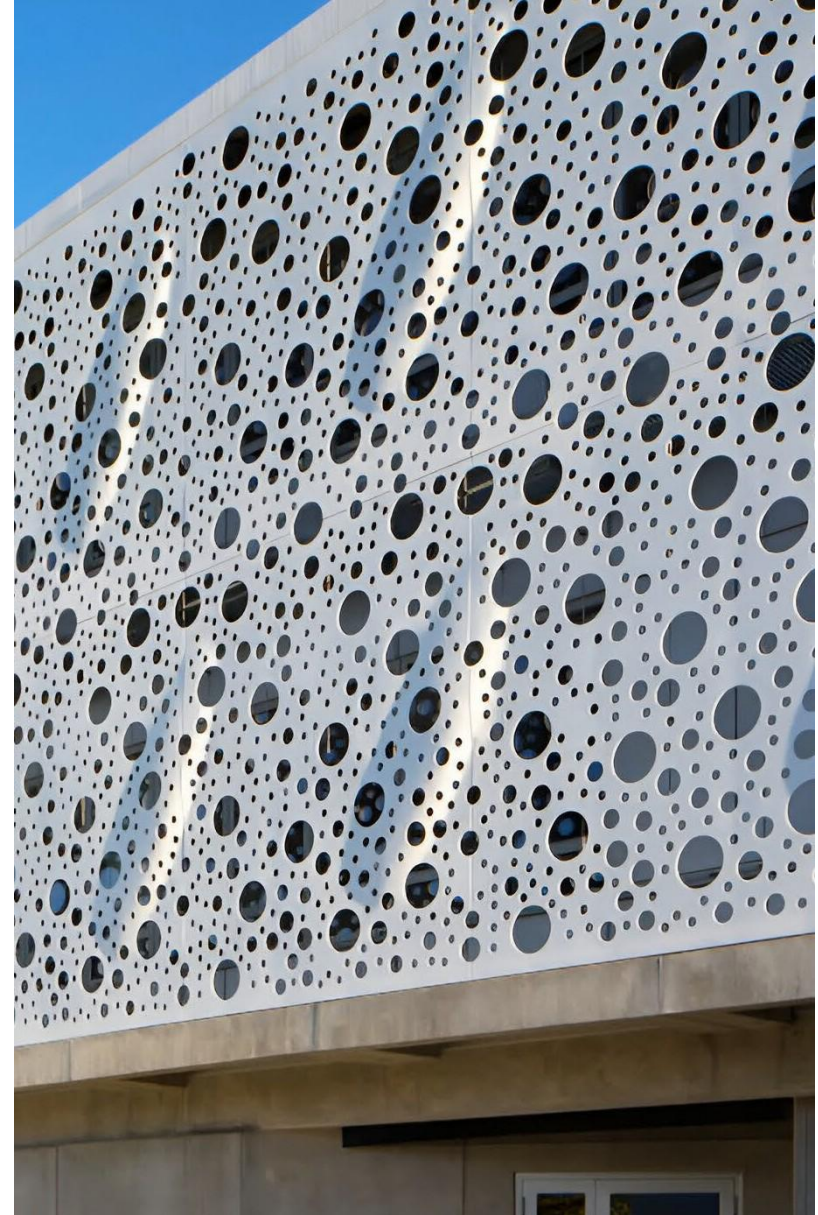
Water Jet
Cutting



Perforated
Screen

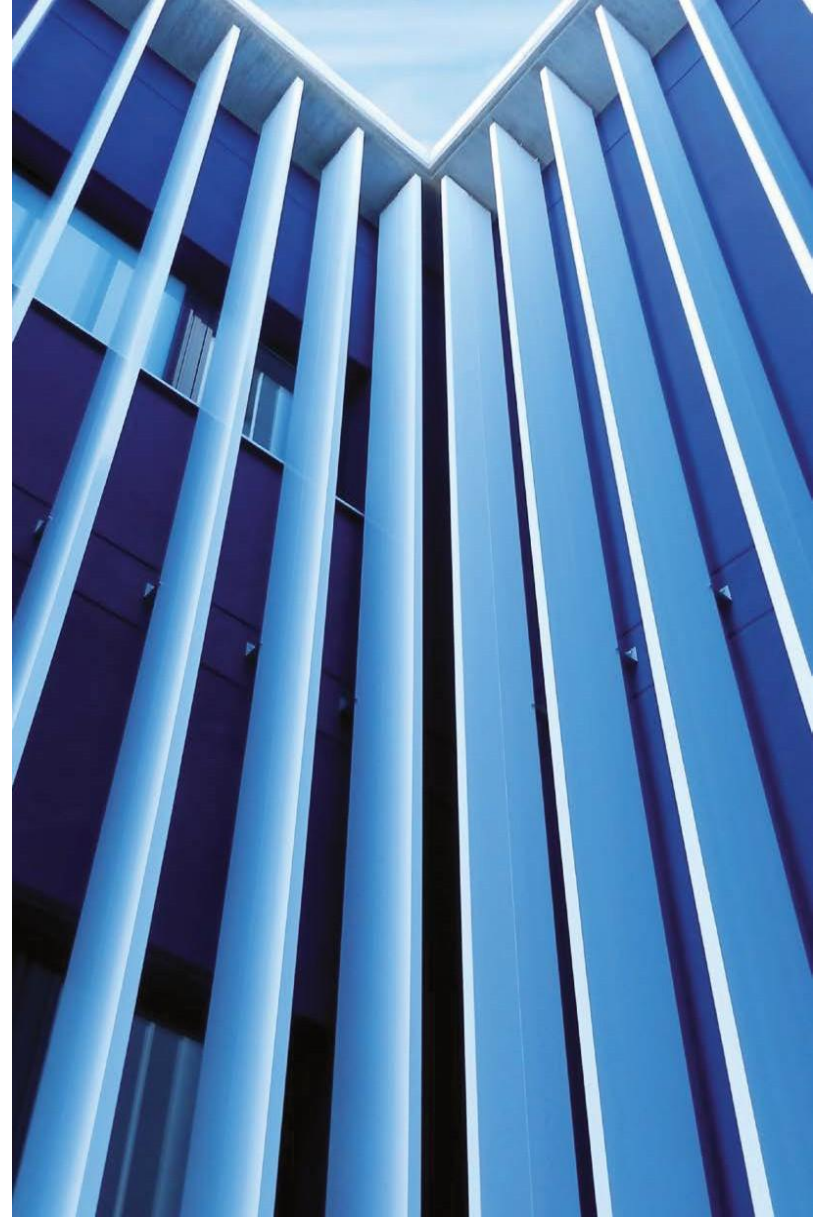
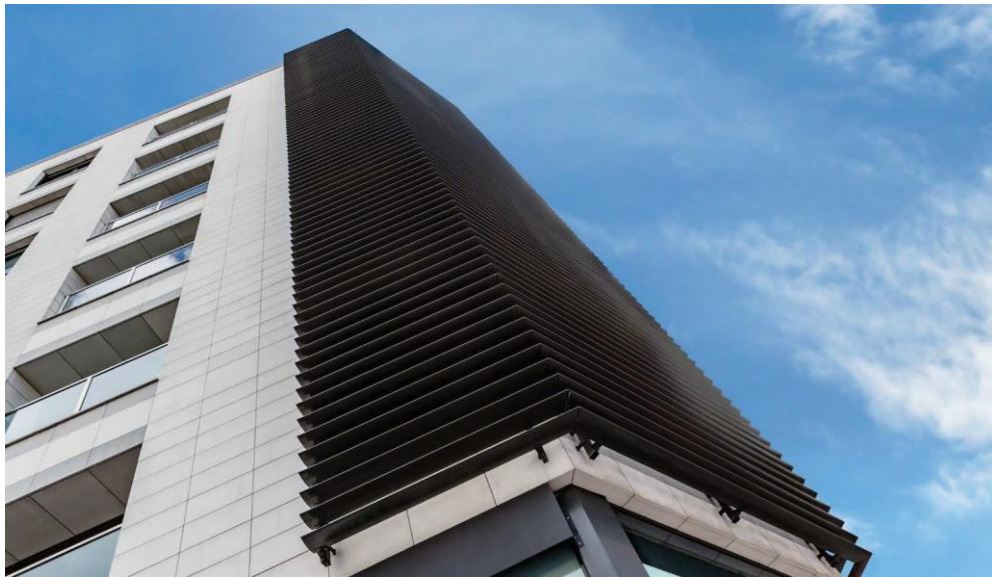


Expanded
Metal Sheet



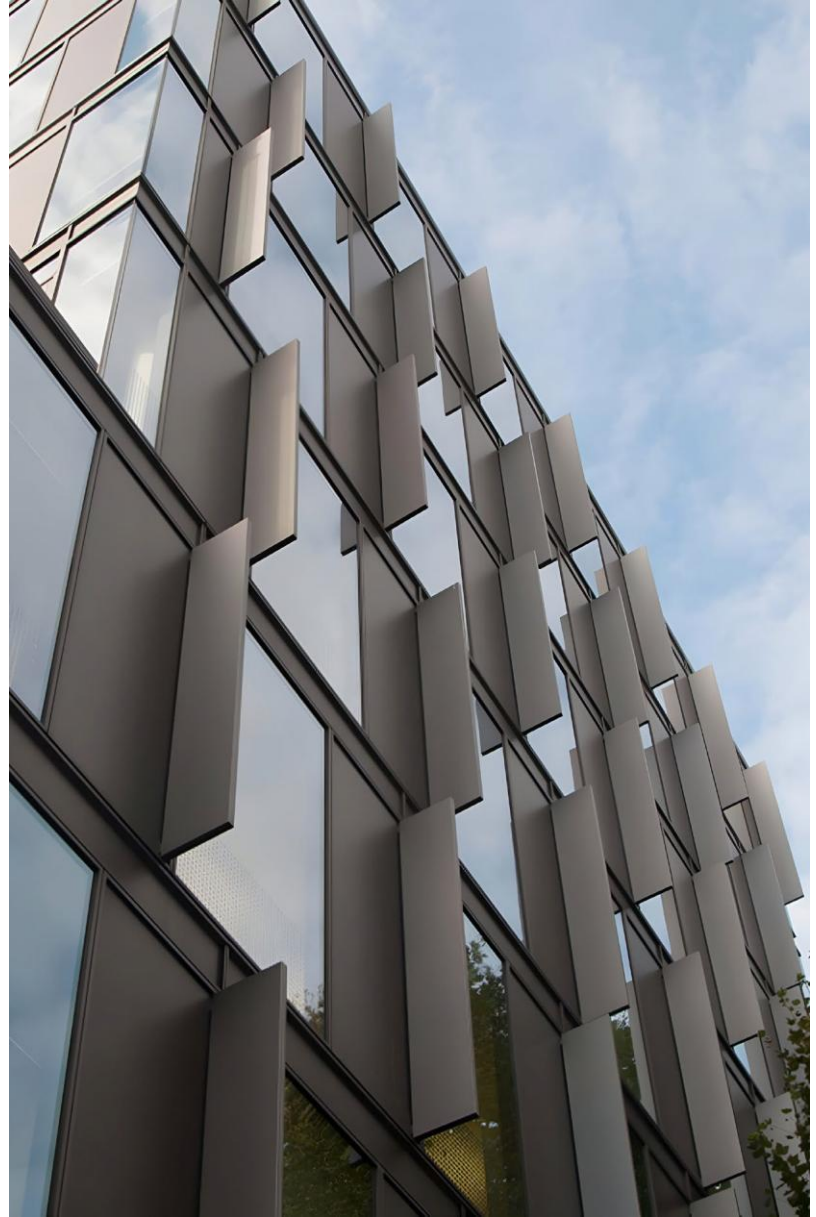
Louvers

Crafted from high-quality metals, enhance building performance while adding a sleek architectural touch.



Cladding

Designed for both residential and commercial applications, our aluminium cladding combines contemporary design with superior performance.



Precision Cutting & Specialty Metal Work

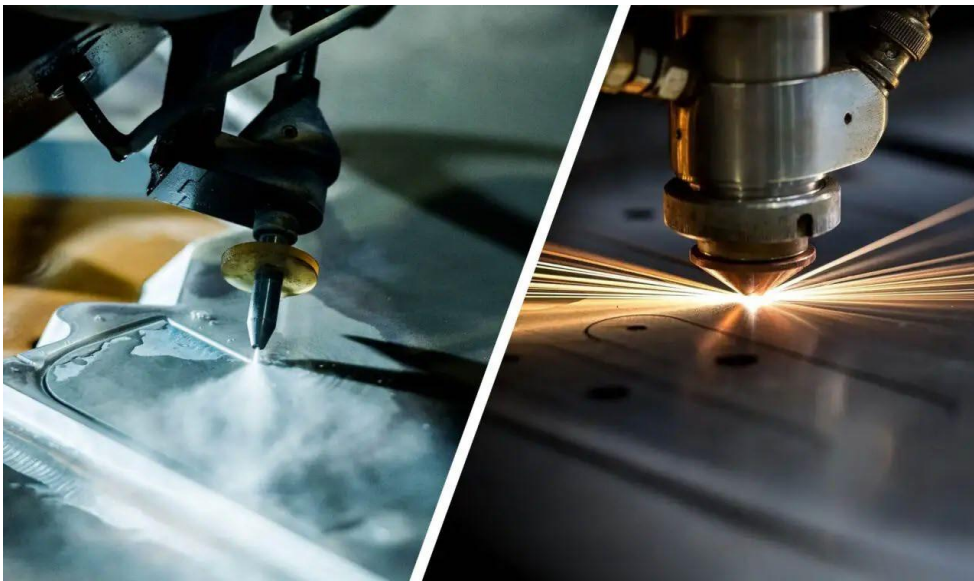
*At **HH-Metal** by **Home Harmony**, we offer advanced precision cutting and specialty metal fabrication services tailored to meet complex design and structural needs. Utilizing state-of-the-art technology, including laser cutting, plasma cutting, and CNC machining, we produce highly accurate and intricate metal components across a variety of materials.*

From decorative panels and signage to custom architectural elements, our team delivers craftsmanship, consistency, and creativity in every detail.



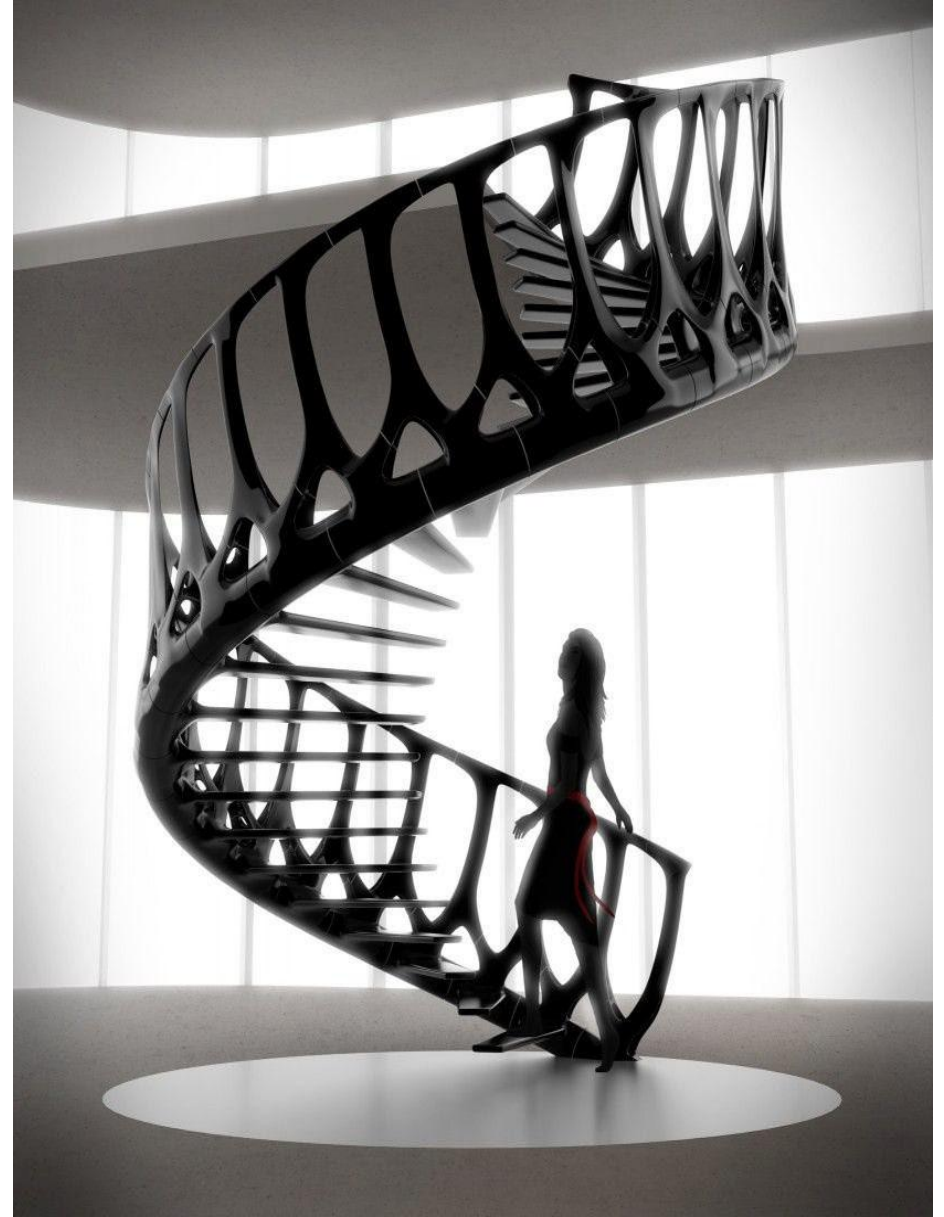
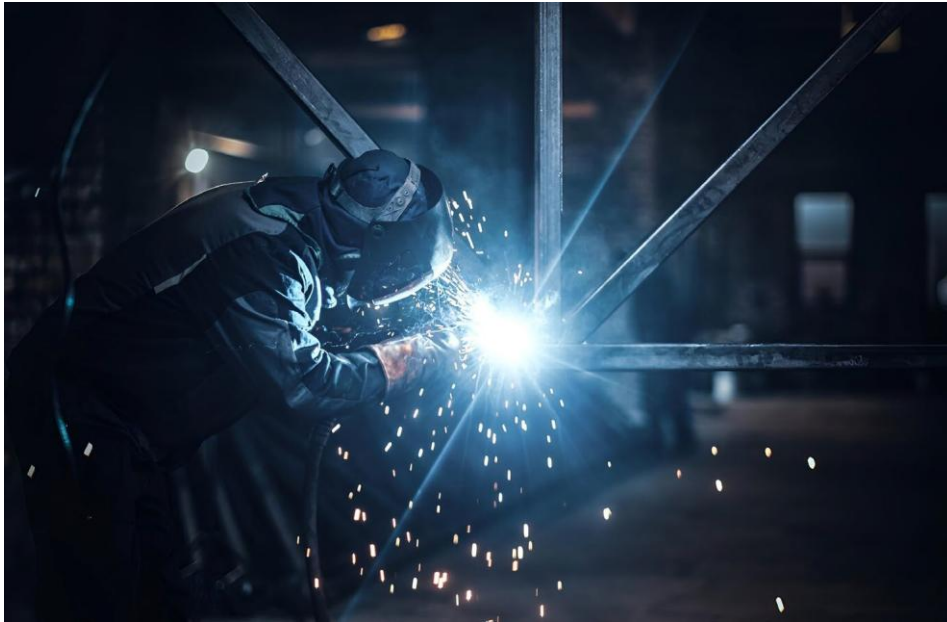
Laser Jet & Water Jet Cutting

High-precision solutions for intricate and large-scale designs.



Custom Fabrication Solutions

Tailor-made metal components crafted with attention to detail and engineering finesse.



Why Choose HH-Metal?

Design Excellence: Blending form with function for impactful results.

Engineering Precision: Advanced fabrication techniques for durability and detail.

Customization & Flexibility: Tailor-made solutions to meet unique project requirements.

Legacy of Trust: Backed by the reputation and reliability of Home Harmony.



HH023 – Discovery Dunes, Dubai South



HH023 – Discovery Dunes, Dubai South




Project: HH023 – Discovery Dunes
Dubai South




Consultant: Olsen and Partners

Year: 2025

Scope of Work: Greeter & Comfort Station

HH023 – Discovery Dunes, Dubai South

| | | | |
|--|---|--|--------------------------|
|  | OLSEN & PARTNERS INTERIORS LLC | REF NO.: | OPI.265-CS1&2-HH-TR-0003 |
| | DOCUMENT TRANSMITTAL | REVISION/ISSUE: | 0 |
| | | DATE: | 18-Sep-25 |
| | | PAGE: | 1 OF 1 |
| DOCUMENT TRANSMITTAL SHEET | | REF NO. : | OPI.265-CS1&2-HH-TR-0003 |
| OPI HEAD OFFICE | | | |
| ORIGINATOR : Olsen & Partners Interiors LLC The Opus by Zaha Hadid B Block, 2nd Floor P.O. Box: 283025 | | RECIPIENT : Company: M/s HOME HARMONY Attention: Mr. Amr Quntar Email: amr@homeharmony.ae | |
| Serial No. | Document Title / Revision No. | TYPE | ACTION CODE |
| OPI.265_Discovery Dunes Comfort Station 1 & 2 | | | |
| 1 | OPI.265-CS1&2-DD-SM-A-0043 - Metal cladding paint finish sample RAL 7022 - Code B | SM | B |
| 2 | OPI.265-CS1&2-SD-S-026 Rev.0 - Code B | SD | B |
| 3 | OPI.265-CS1&2-SD-S-027 Rev.0 - Code B | SD | B |
| *** Nothing as Follows*** | | | |
| | | | |
| | | | |
| | | | |
| | | | |
| | | | |
| | | | |
| | | | |
| | | | |
| ISSUED BY: | | ACKNOWLEDGE BY | |
| Company: OLSEN & PARTNERS INTERIORS LLC Date: 18-Sep-2025 | | Name: _____ Date: _____ | |
| (*) TYPE: <input type="checkbox"/> SD: Shop Drawings <input type="checkbox"/> MS: Material Specifications <input type="checkbox"/> SM: Sample <input type="checkbox"/> OT: Others | | (**) ACTION CODE: <input type="checkbox"/> A: For Action <input type="checkbox"/> B: Approved as noted <input type="checkbox"/> C: Revise & Resubmit <input type="checkbox"/> D: Information/ Reference | |

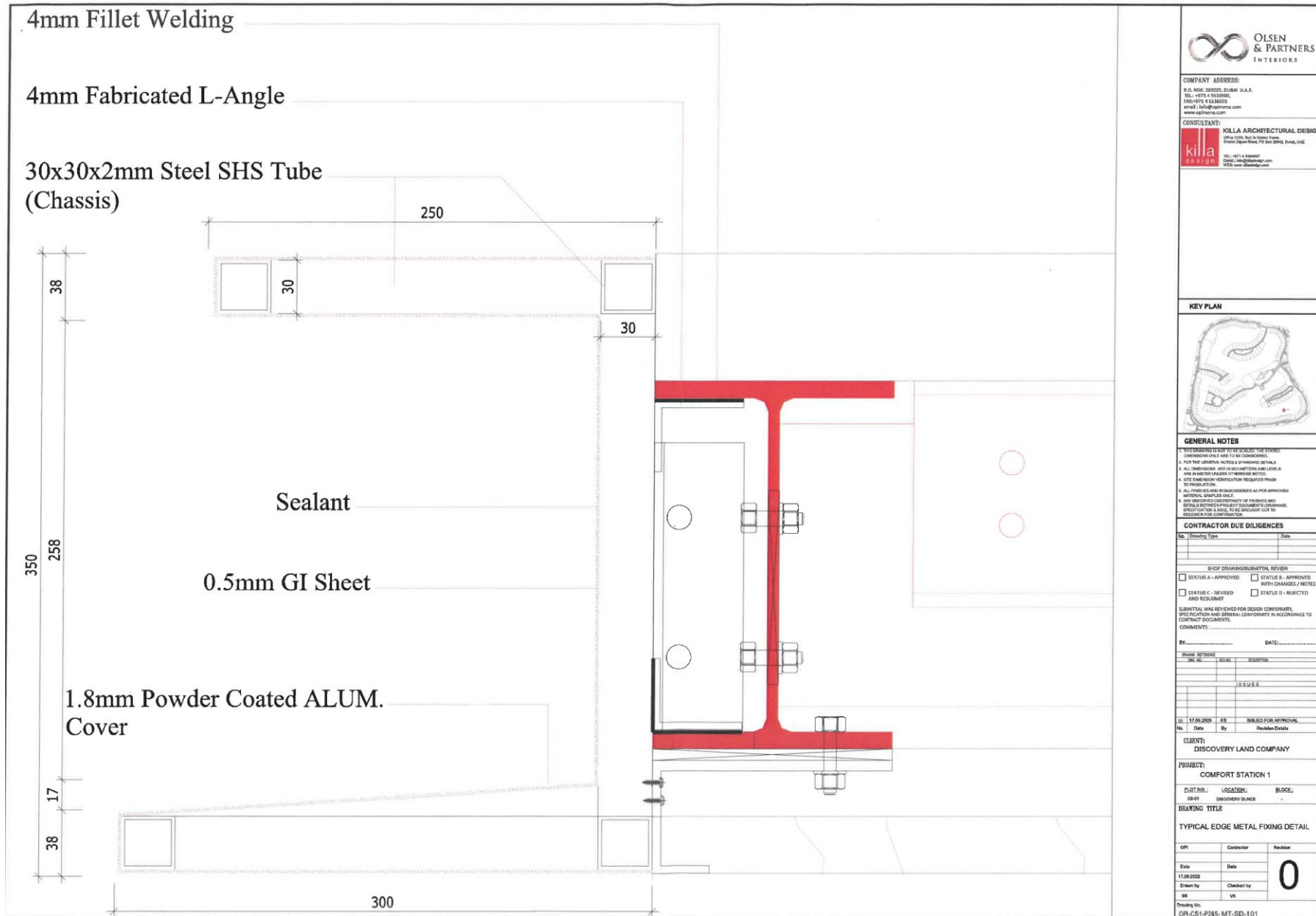
| | | | | | | | |
|--|---|--|------------------------|--------------------------------------|-----------|----------------|----------------------|
|  |  |  | | | | | |
| TECHNICAL SUBMITTAL | | | | | | | |
| Project: | Discovery Dunes Comfort Station 1 & 2 | Ref. No.: | OPI.265-CS1&2-SD-S-027 | | | | |
| Contract: | | Date: | 17 September 2025 | | | | |
| Description: | Shop Drawings | Attention: | | | | | |
| Type code: | BIM – Building Information Model CAL – Calculation CER – Certificate COS – Compliance Statement DOC – Document DRP – Daily Report DWG – Drawings GUA – Guarantee MAS – Material Submittal MES – Method Statement MND – Manufacturers Data MRP – Monthly Report OTH – Others PPL – Proposal PRQ – Pre-Qualification SAM – Samples SAR – Site Accident Report SCH – Schedule SHD – Shop Drawing SSB – Sample Submittal TED – Technical Data TNS – Technical Submittal TRP – Test Reports WAR – Weekly Report WRP – Warranty | Submittal Code: 1 – Approval 2 – Information Status code: A – Approved B – Approved with comments C – Not approved/Resubmit D – For Information | | | | | |
| Sr. No. | Doc Ref. | Rev | Rev date | Description | Type code | Submittal code | Status code (by KLD) |
| 1. | OPI-P265-CS2-MT-SD-101 | 0 | 2025 | CS2 TYPICAL EDGE METAL FIXING DETAIL | SHD | 1 | B |
| Make finish. Tech specs to be approved by KLD. No visible joints. | | | | | | | |
| Digital Copy: <input type="checkbox"/> Yes <input type="checkbox"/> No Download link: | | | | | | | |
| Submitted by (Contractor's PM): Name: Mr. Moz Arif Signature: _____ Date: 17 September 2025 | | | | | | | |
| Received by (KLD): Name: Jali Ahmad Signature: _____ Date: 17/09/25 | | | | | | | |
| BELOW PORTION FOR KLD USE ONLY | | | | | | | |
| Comments | | | | | | | |
| | | | | | | | |
| | | | | | | | |
| | | | | | | | |
| KLD Representative: Name: _____ Signature: _____ Date: _____ | | | | | | | |
| Received by (Contractor): Name: _____ Signature: _____ Date: _____ | | | | | | | |
| Corrections or comments made relative to submittals during this review do not relieve the contractor from compliance with the contract requirements and specifications. This check is only for review of general conformance with the design concept of the project and general compliance with the information given in the contract documents and no time and/or cost implication shall be granted due to the Engineer's/PM instruction. | | | | | | | |
| Note: Continue on next page if more than 7 documents. | | | | | | | |

Note: All works and materials must comply with the requirements of the latest relevant Building Code(s), International Standards, and/ Authority Requirements

Form no.KLD-SF31/21-May-2025/Rev.2

Page 1 of 1

HH023 – Discovery Dunes, Dubai South



HH004 – Nad Al Sheba 3, Dubai



[Click here to view more about this project](#)

HH004 – Nad Al Sheba 3, Dubai



This renovation project is a testament to our ability to take on complex designs and deliver them with precision, style, and the utmost care.

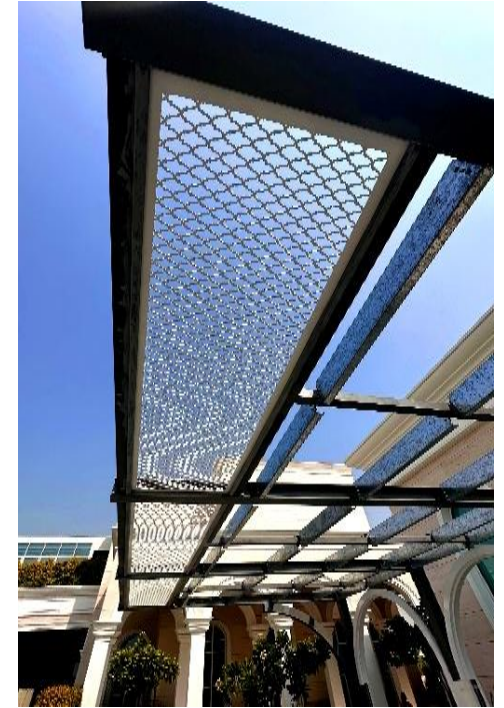


At HH-Metal, we don't just build, we transform spaces to make out client's visions a reality.

[View more](#)



HH004 – Nad Al Sheba 3, Dubai



Project: HH004 – Nad Al Sheba 3, Dubai

Consultant: Designer East

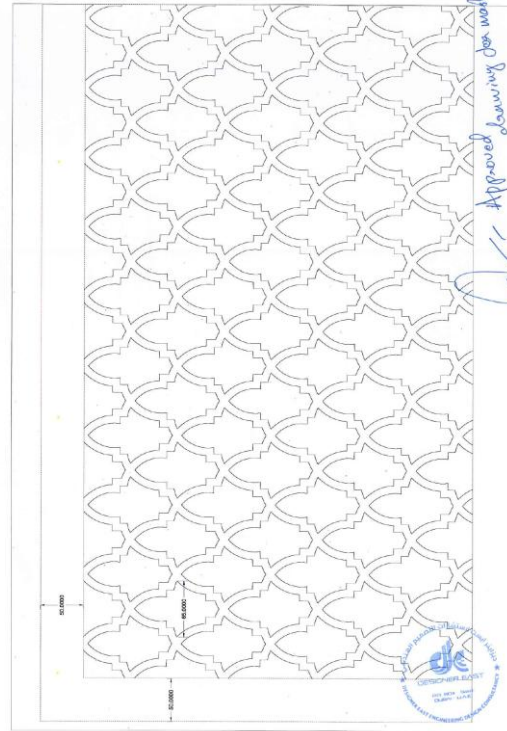
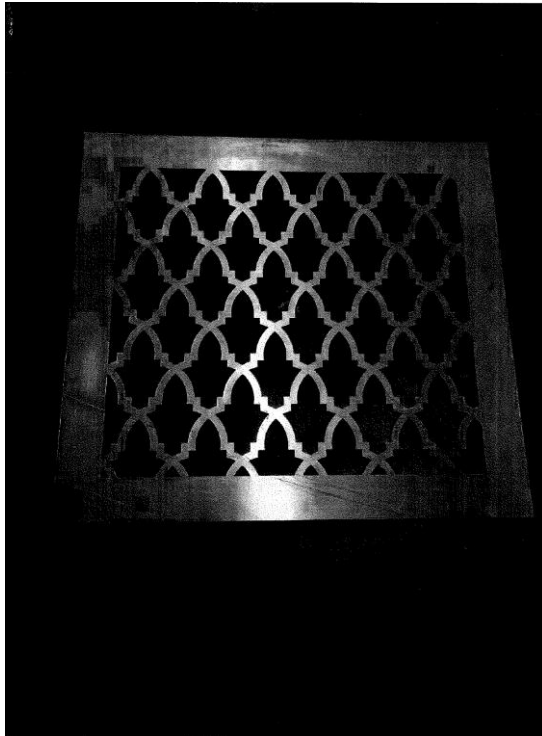
Client: Private

Year: 2025

Scope of Work: Car Parking Pergola/Shades

[Click here to view more about this project](#)

HH004 – Nad Al Sheba 3, Dubai



Approved leaving for workshop



04 261 9744
Office 21B, Ground Floor
Schon Business Park, Central Plaza
Dubai Investments Park 1, Dubai
info@homeharmony.ae
www.homeharmony.ae

Transmittal Form

Form: HH-00-4 - Dated: 14-07-2025

| | |
|----------------------------------|----------------------------------|
| Project No.: HH004 | Transmittal Ref. #: TR0035-SA-01 |
| Project Name: Car Parking shades | Submitted By: Mohammed Kabbani |
| From: Home Harmony | Signature: |
| To: Mr. Rafi | Date: 14.07.2025 |
| Company: Designer East | Received By: |
| Address: Dubai – UAE | Signature: |
| Tel.: | Date: |

Type of Submittal

| | | | |
|----------------------------------|---|---|-----------------------------------|
| <input type="checkbox"/> Drawing | <input type="checkbox"/> Technical Data | <input type="checkbox"/> Method Statement | <input type="checkbox"/> Warranty |
| <input type="checkbox"/> Sample | <input type="checkbox"/> Testing | <input type="checkbox"/> Calculation | <input type="checkbox"/> Others's |

Issued For

| | | | |
|---------------------------------------|---------------------------------|-----------------------------------|---------------------------------------|
| <input type="checkbox"/> Approval | <input type="checkbox"/> Action | <input type="checkbox"/> As Built | <input type="checkbox"/> Information |
| <input type="checkbox"/> As requested | <input type="checkbox"/> Others | <input type="checkbox"/> Record | <input type="checkbox"/> Construction |

| Sl# | Ref. # | Description | Rev. | Size | Qty | Remarks |
|-----|-------------------------|-------------------------|------|------|-----|---------|
| 1. | 2025.07.14 SA HH0004 | 50X50 Mashrabiya Sample | 01 | | 1 | |
| 2. | | | | | | |
| 3. | | | | | | |
| 4. | | | | | | |

Status

| | | |
|--|---|---------------------------------------|
| <input checked="" type="checkbox"/> A - Approved | <input type="checkbox"/> B - Approved with Comments [Proceed/Resubmit] | <input type="checkbox"/> C - Rejected |
|--|---|---------------------------------------|

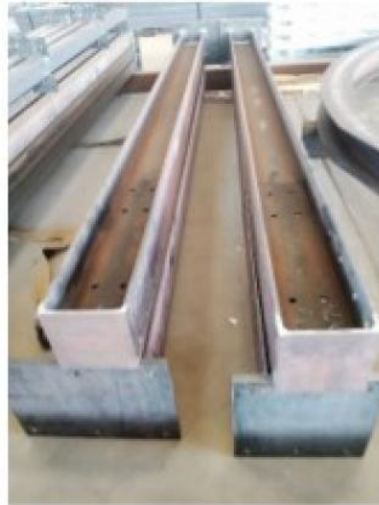


Colour: Same Colour of Aluminium cladding

[View more](#)



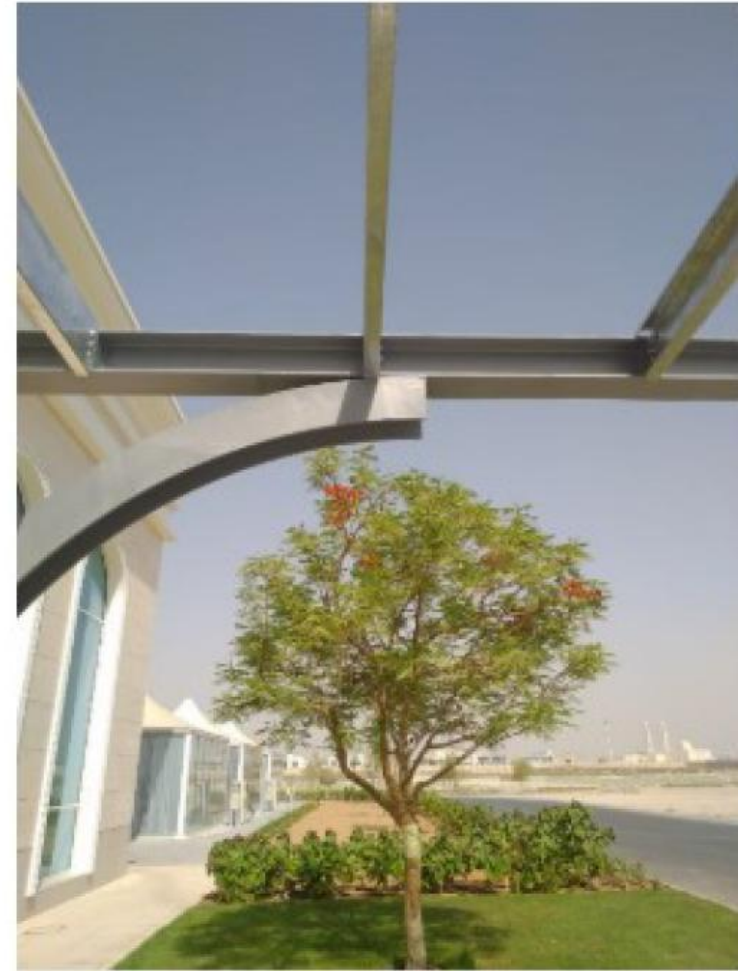
HH004 – Nad Al Sheba 3, Dubai



[View more](#)



HH004 – Nad Al Sheba 3, Dubai



[View more](#)



HH004 – Nad Al Sheba 3, Dubai



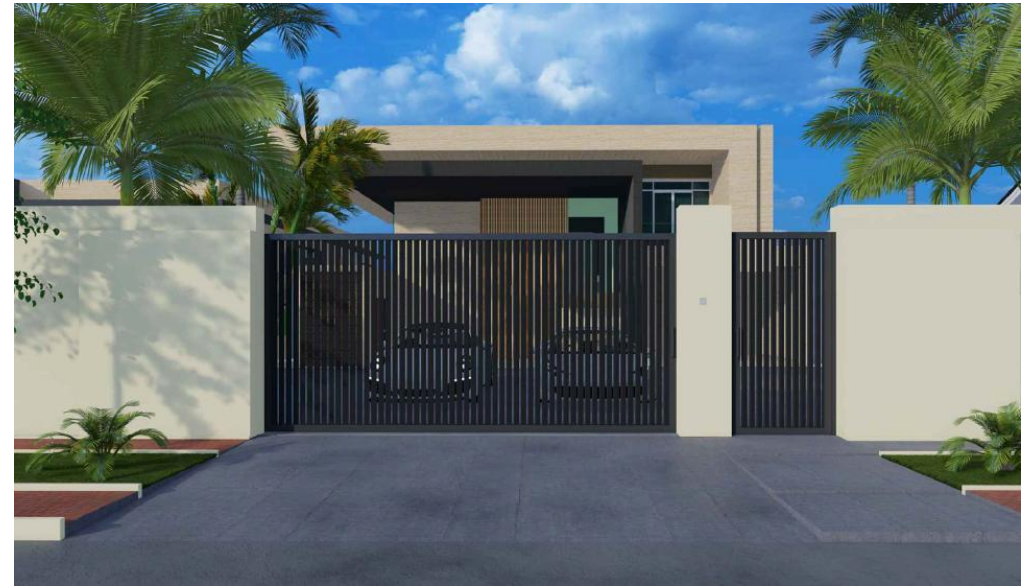
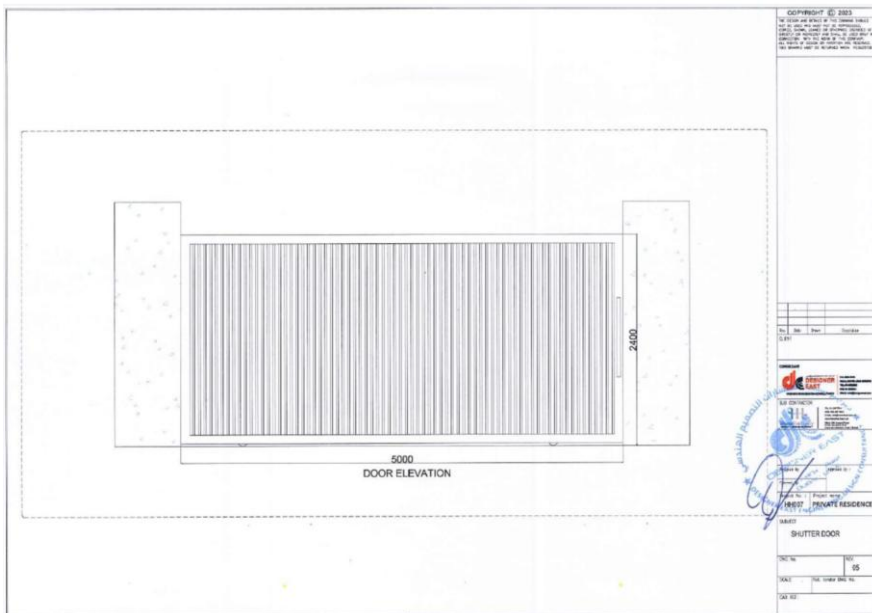
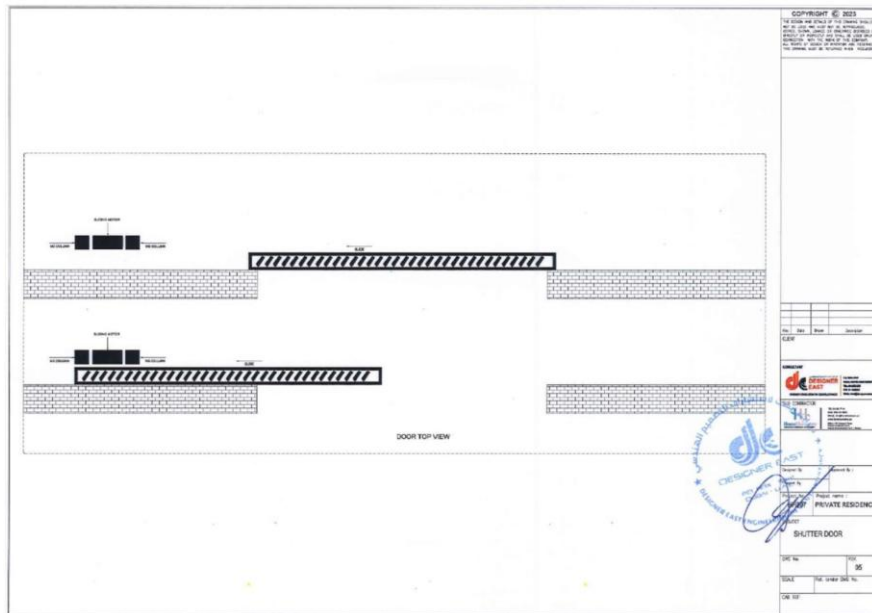
The project began with a thorough design process, during which we collaborated closely with the client to ensure the final structure blended seamlessly with the villa's architectural style. We utilized high-quality materials and cutting-edge design elements to create a shade that was both elegant and durable. Our team worked tirelessly through every phase, from the initial structural framework to the meticulous finishing touches.

HH007 – Al Awir, Dubai



[Click here to view more about this project](#)

HH007 – Al Awir, Dubai



Project: HH007 – Al Awir, Dubai

Consultant: Designer East

Client: Suhail, Saeed & Hamda

Year: 2025

Scope of Work: Metal & Decorative work

HH008 – Jumeirah, Dubai

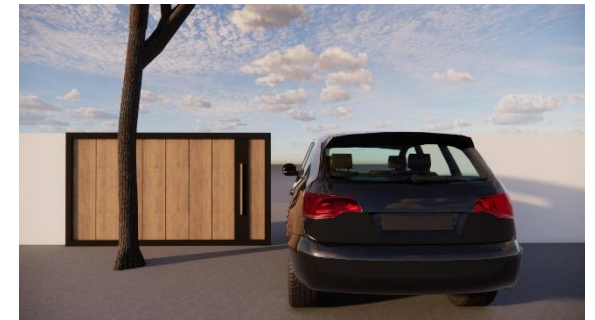


HH011 – Jumeirah, Dubai



[Click here to view more about this project](#)

HH011 – Jumeirah, Dubai



Project: HH011 – Jumeirah, Dubai

Consultant: Mivido Factur

Client: Private

Year: 2025

Scope of Work: Metal & Decorative work

HH0113 – JVC, Dubai



Project: HH013 – JVC, Dubai

Consultant: Emirates Pearl

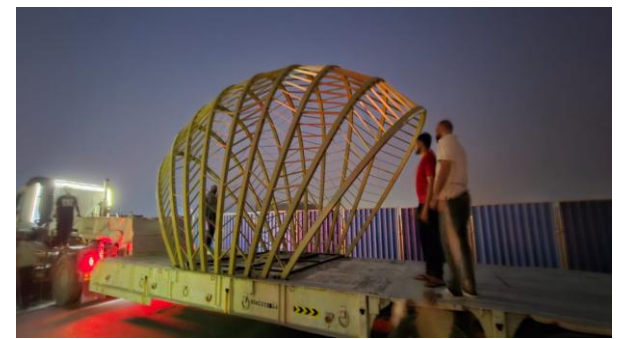
Year: 2025

Scope of Work: Pergola

[Click here to view more about this project](#)



HH0113 – JVC, Dubai



Project: HH013 – JVC, Dubai

Consultant: Emirates Pearl

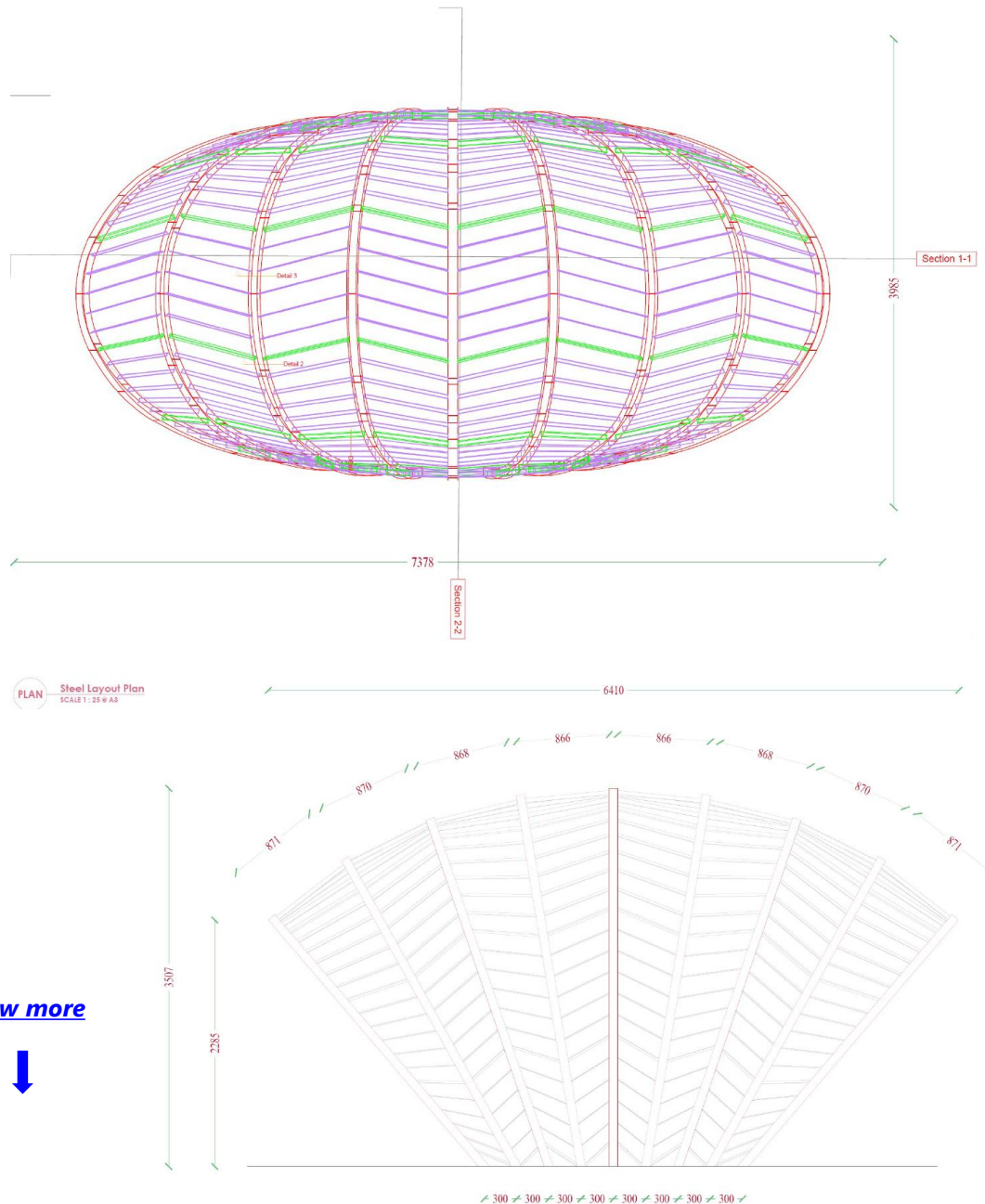
Year: 2025

Scope of Work: Pergola

[Click here to view more about this project](#)



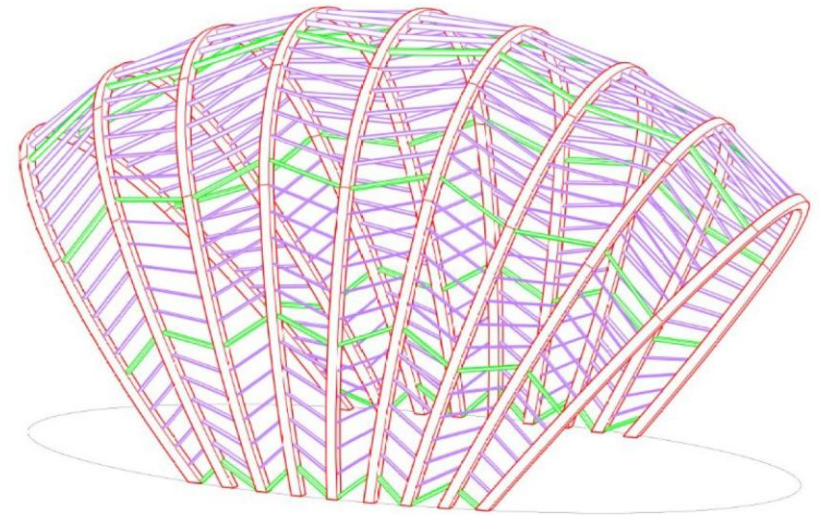
HH0113 – JVC, Dubai



| | | | | | |
|---|--|--|--|---|-----------|
| Client Circle Capital Investment - FZCO | | Consultant KWEC | | Main Contractor الاولى للبناء والتشييد Emirates Pearl Construction | |
| SHOP DRAWING SUBMITTAL | | | | | |
| Project No. | P-673 | Ref. No. | DB27-EPCC-KWEC-SHD-0116 | | |
| Project Name: | Residential and Retail Building/Retail (G + 4F + 11 F+ Roof) | Rev. No. | 05 | Date: | 23-Aug-25 |
| Plot No. | JVC 16BMRM002 | Location: | Al Barsha South | City: | Dubai |
| Discipline: | <input type="checkbox"/> Mechanical <input checked="" type="checkbox"/> Architectural | <input type="checkbox"/> Electrical <input type="checkbox"/> Structural | <input type="checkbox"/> Plumbing <input type="checkbox"/> Others | | |
| Submittal Title: | | | | | |
| SN | DRAWING NO. | DESCRIPTION | TYPE | COPIES | REMARKS |
| 1 | 0 | Shopdrawings for Pergola in Landscaping Area 1st Floor | DOC | 1 | |
| Supplier/Manufacturer: | | HOME HARMONY | | | |
| Submitted by: | | EPCC | | | |
| Checked / Reviewed by: | | Eng. Bayomy Abdalla | | Received by: (KWEC) Signature / Date | |
| Note: We certify that the documents submitted herewith have been reviewed and are in conformance with the Contract except as otherwise stated. | | | | | |
| KWEC APPROVAL / COMMENTS | | | | | |
| Comments | welding to be equal to section thickness | | | APPROVED | |
| | contractor to follow all details as per approved concept | | | APPROVED AS NOTED | |
| | subjected to final approval at site | | | REVISE & RESUBMIT | |
| | | | | REJECTED | |
| | | | | NOTED | |
| | | | FOR INFORMATION | | |
| | | | OTHERS : | | |
| Reviewed / Approved by: | | (Engineer's Name) | | (Signature) | |
| | | | | (Date) | |
| CLIENT APPROVAL / COMMENTS | | | | | |
| Comments | | | | APPROVED | |
| | | | | APPROVED AS NOTED | |
| | | | | REVISE & RESUBMIT | |
| | | | | REJECTED | |
| | | | | NOTED | |
| | | | FOR INFORMATION | | |
| | | | OTHERS : | | |
| Reviewed / Approved by: | | (Client Representative) | | (Signature) | |
| | | | | (Date) | |

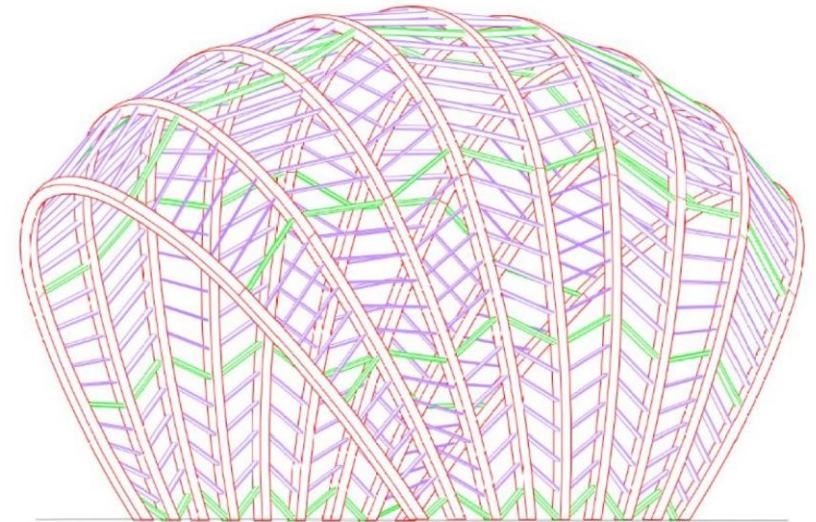
NOTE: This form is to be reviewed and approved within 14days upon receipt.

HH0113 – JVC, Dubai



3D

3D Shot 1
SCALE None @ A3



3D

3D Shot 2
SCALE None @ A3

HH026 – District 1, Dubai

Project: HH026 – District 1, Dubai

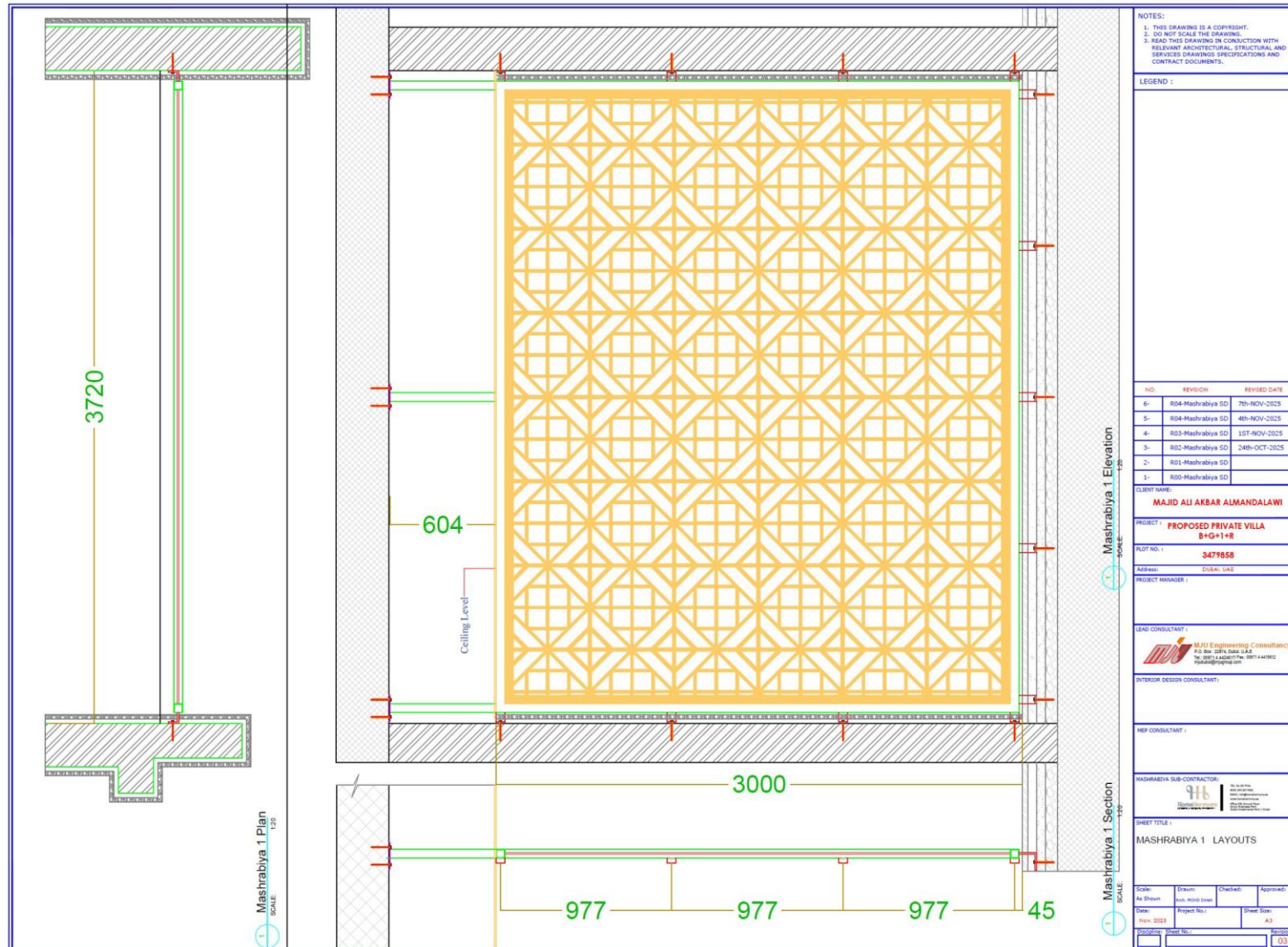
Consultant: MJU Group

Year: 2025

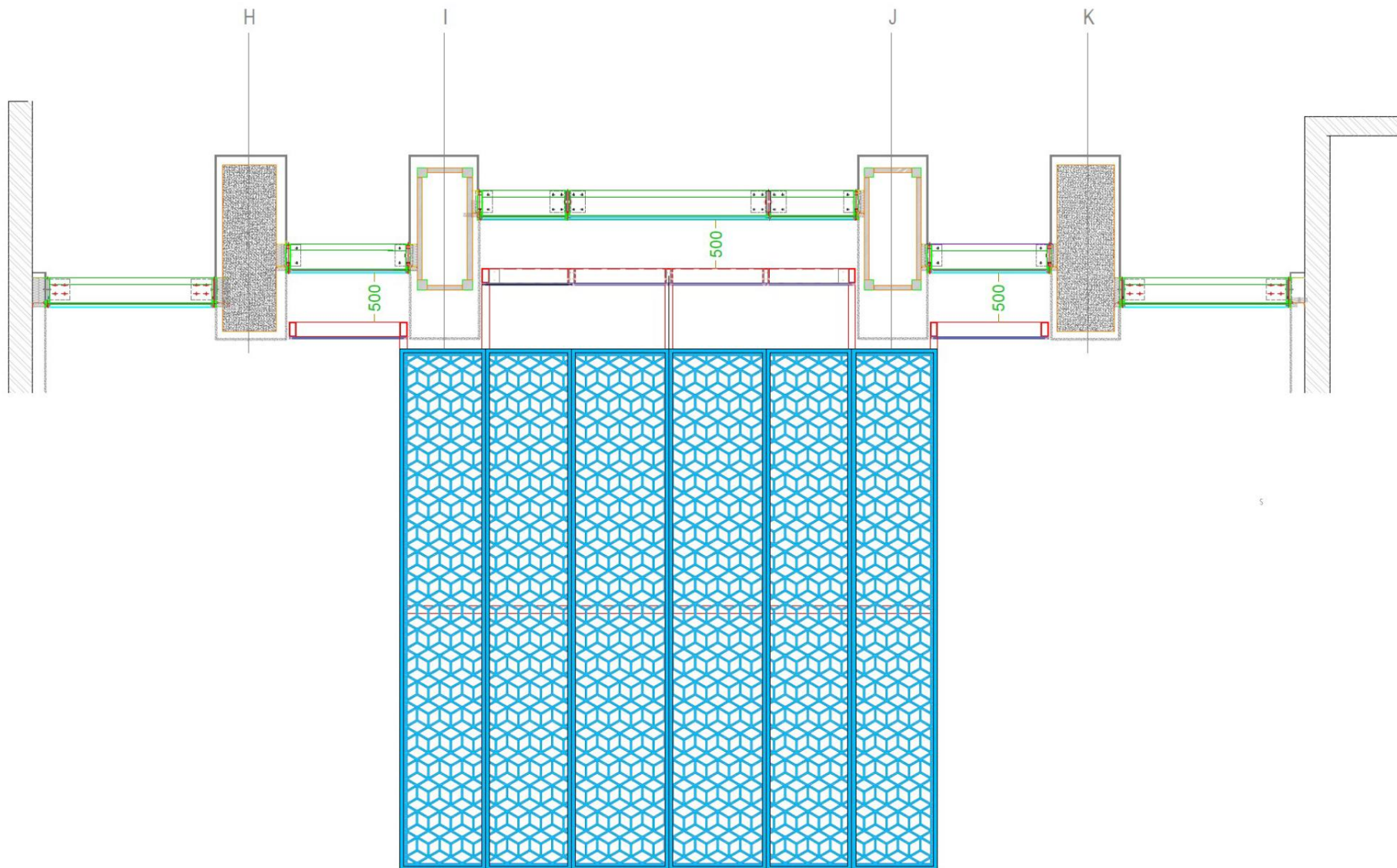
Scope of Work: Mashrabya



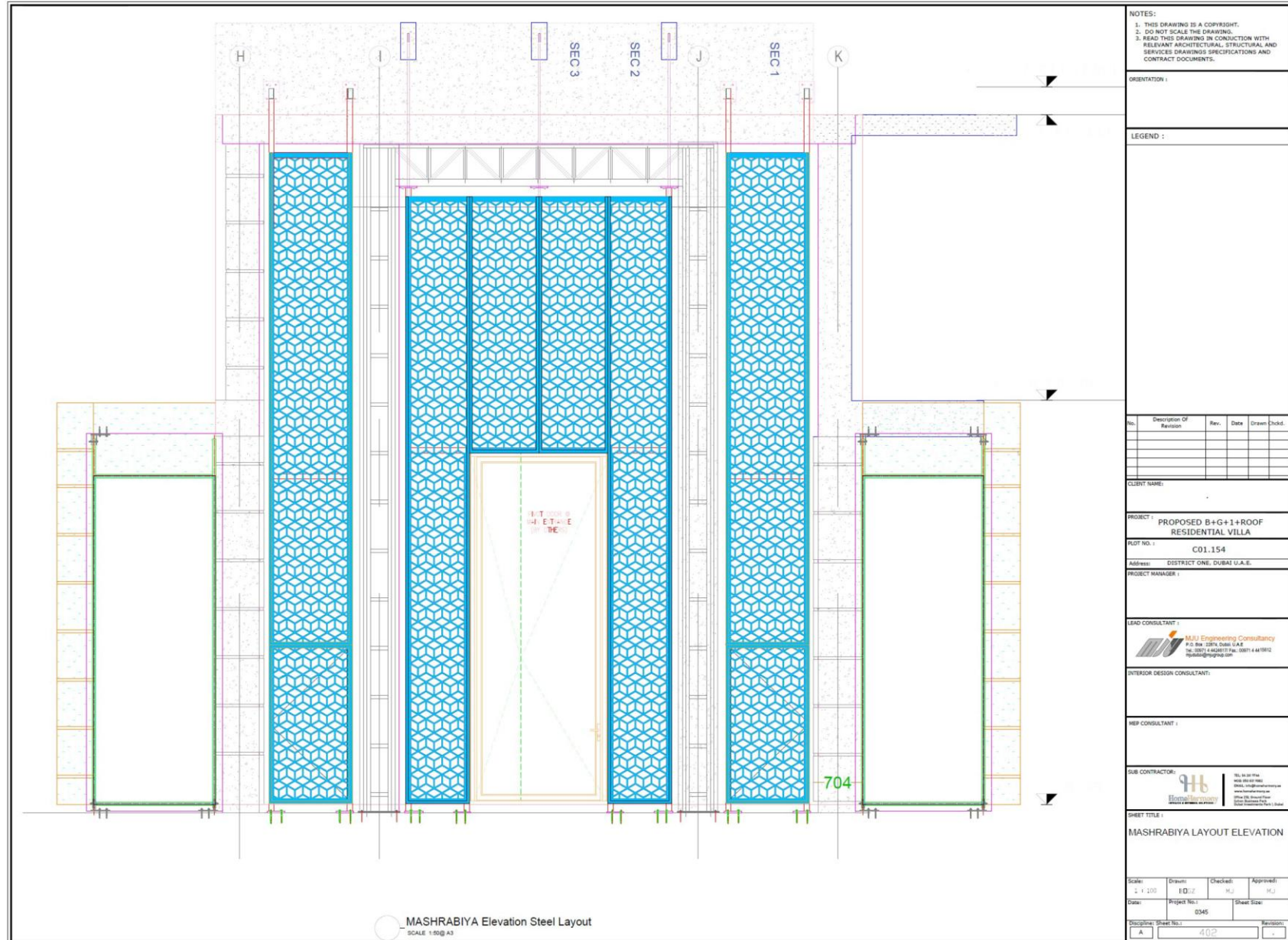
HH026 – District 1, Dubai



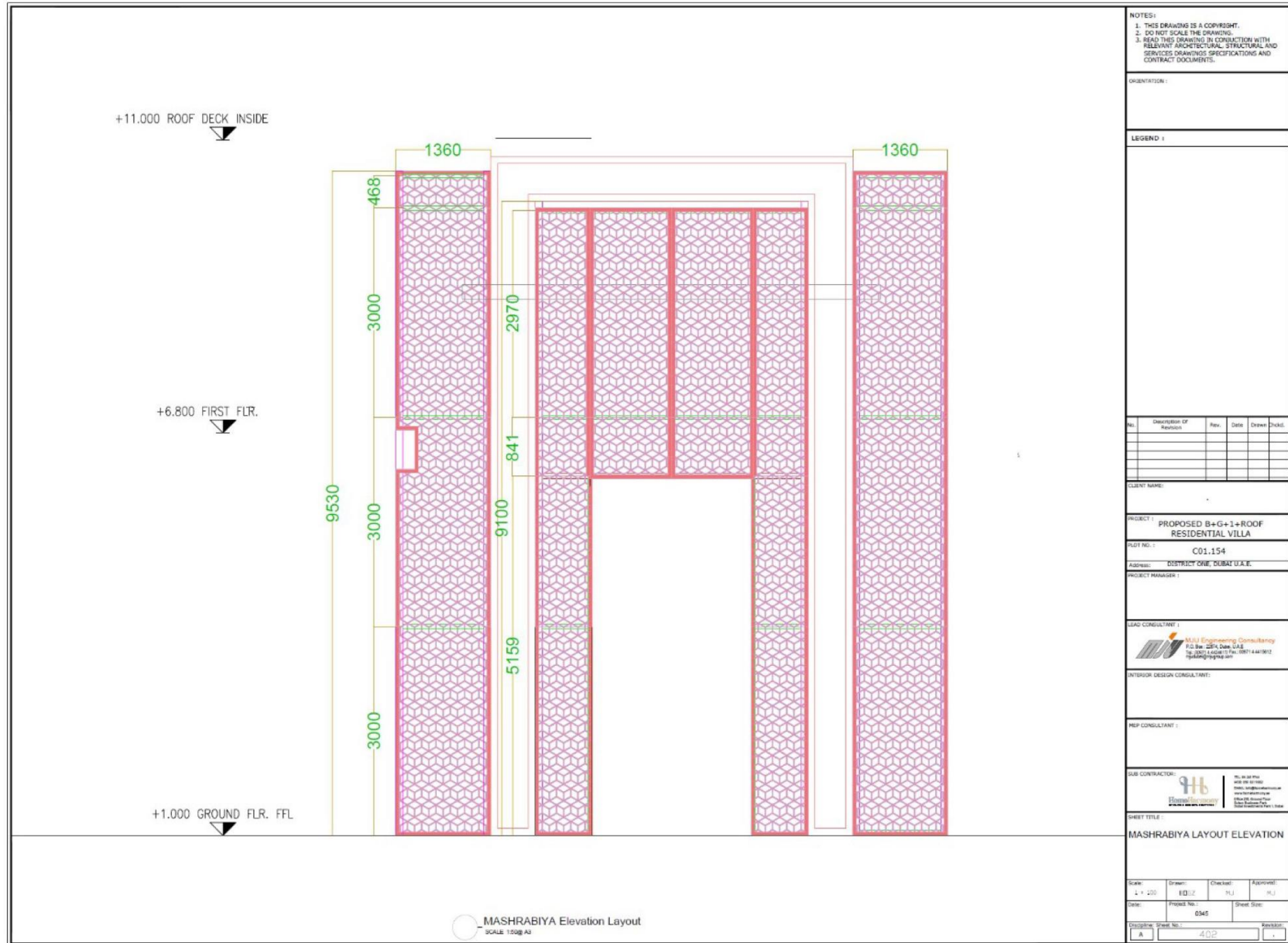
HH026 – District 1, Dubai



HH026 – District 1, Dubai



HH026 – District 1, Dubai



HH027 – District 1, Dubai



Project: HH027 – District 1, Dubai

Consultant: Designer East

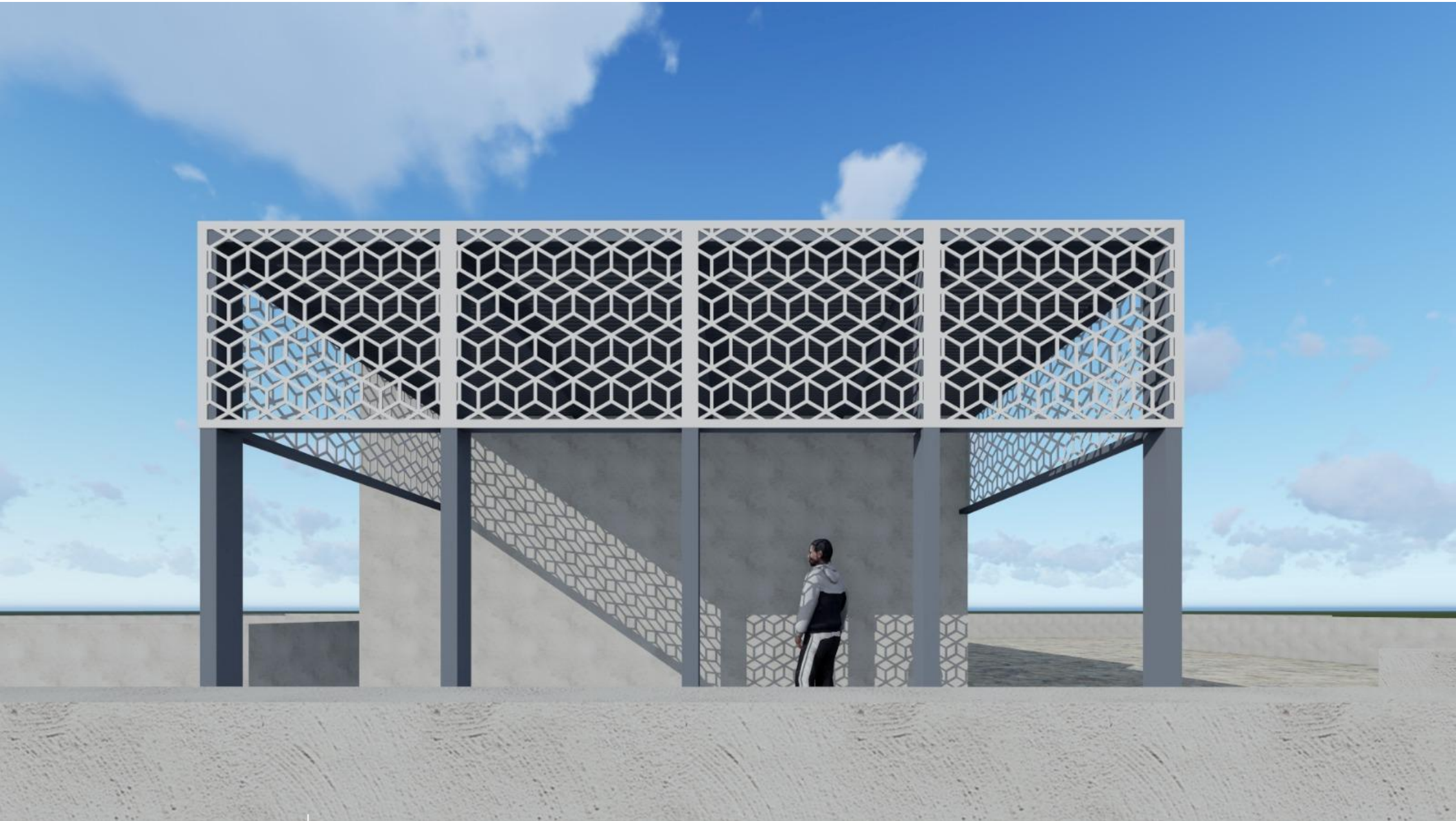
Year: 2025

Scope of Work: Metal & Decorative work

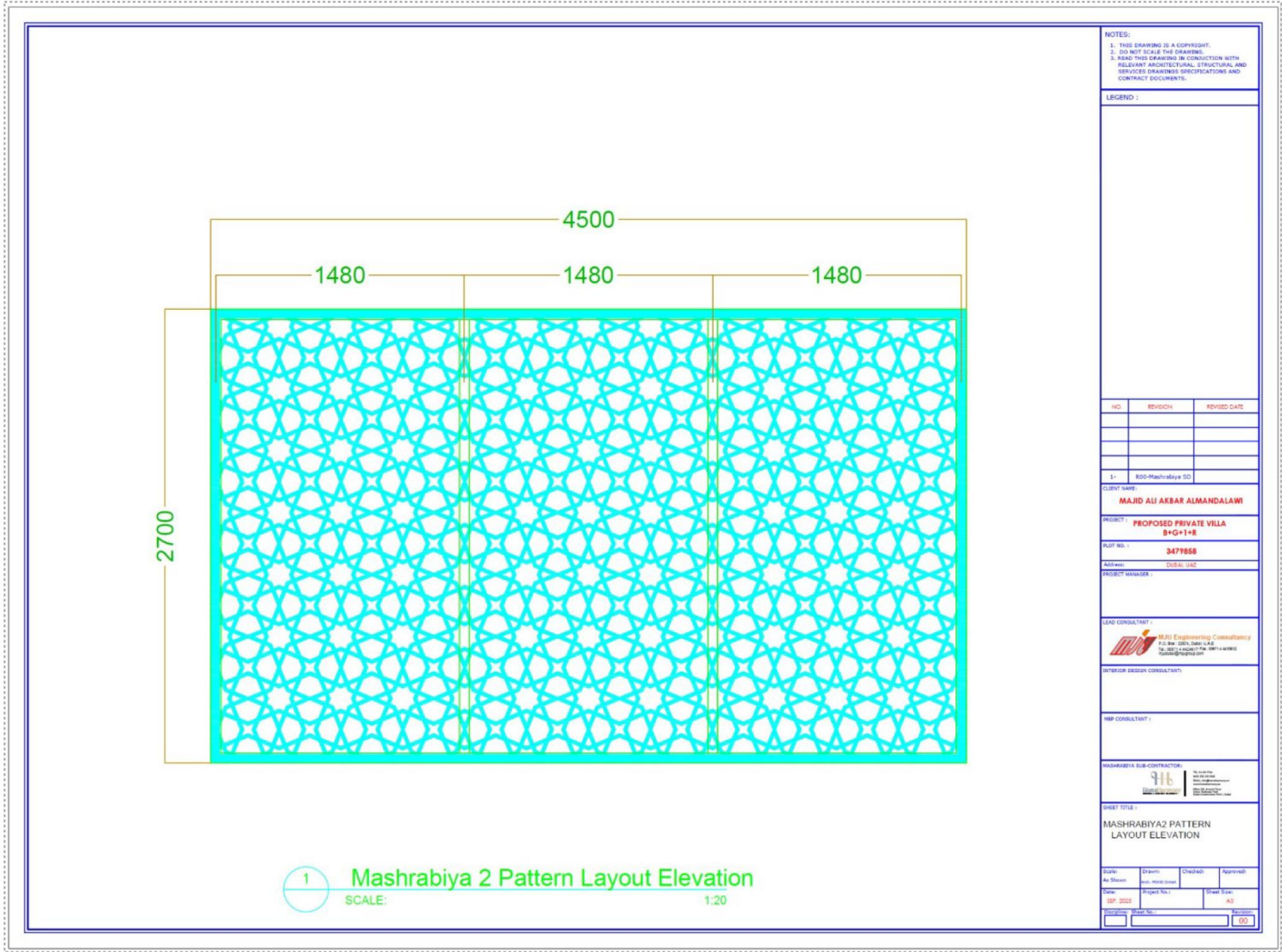


HH028 – District 1, Dubai

HH028 – District 1, Dubai



HH028 – District 1, Dubai



Project: HH028 – District 1, Dubai
Consultant: MJU Group
Year: 2025
Scope of Work: Mashrabiya

HH002 – Nad Al Sheba, Dubai



HH002 – Nad Al Sheba, Dubai

Ref: D83-PO-2036-04

Date: 08.01.2025

SUBCONTRACT AGREEMENT

Project : ALUMINIUM & GLAZING WORKS AT G+1 VILLA
Client : D83 FOR DECORATION DESIGN & FITOUT EST.
Sub Contractor: HOME HARMONY INTERIOR DESIGN L.L.C
Consultant : M/s DESIGNER EAST ENGINEERING DESIGN CONSULTANCY
Location : AL MERKADH, DUBAI, UAE.
Plot Number : PLOT NO. 3474807



1st Party:

D83 For Decoration
Design & Fitout EST.



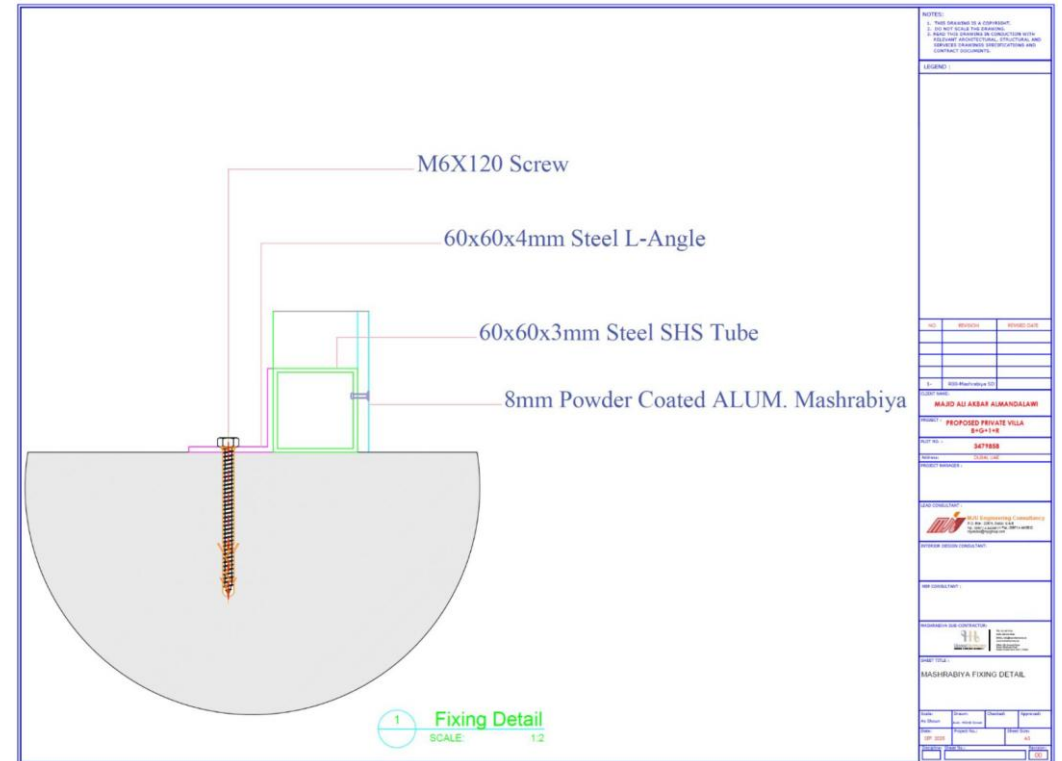
2nd Party:

M/s Home Harmony
Interior Design LLC



3rd Party:

M/s Designer
East Engineering



Project: HH002 – Nad Al Sheba, Dubai

Consultant: Designer East

Client: Muzibur Rehman

Year: 2025

Scope of Work: Aluminium Work

HH0010 – Al Awir, Dubai



LEGEND

| | |
|----|------------|
| AL | ALUMINUM |
| GL | GLASS |
| PL | PIVOT |
| HL | HANDLE |
| LT | LOCKING |
| ST | STOP |
| BT | BUTTERFLY |
| MT | MULTIPOINT |
| PT | PIVOT |
| ST | STOP |
| BT | BUTTERFLY |
| MT | MULTIPOINT |

NOTE: SITE MEASUREMENTS TO BE TAKEN.

APPROVED

NOTE: SITE MEASUREMENTS TO BE TAKEN.

UNIT TYPE

| | |
|-----------|--------|
| UNIT TYPE | OR-01 |
| UNIT TYPE | OR-02 |
| UNIT TYPE | OR-03 |
| UNIT TYPE | OR-04 |
| UNIT TYPE | OR-05 |
| UNIT TYPE | OR-06 |
| UNIT TYPE | OR-07 |
| UNIT TYPE | OR-08 |
| UNIT TYPE | OR-09 |
| UNIT TYPE | OR-10 |
| UNIT TYPE | OR-11 |
| UNIT TYPE | OR-12 |
| UNIT TYPE | OR-13 |
| UNIT TYPE | OR-14 |
| UNIT TYPE | OR-15 |
| UNIT TYPE | OR-16 |
| UNIT TYPE | OR-17 |
| UNIT TYPE | OR-18 |
| UNIT TYPE | OR-19 |
| UNIT TYPE | OR-20 |
| UNIT TYPE | OR-21 |
| UNIT TYPE | OR-22 |
| UNIT TYPE | OR-23 |
| UNIT TYPE | OR-24 |
| UNIT TYPE | OR-25 |
| UNIT TYPE | OR-26 |
| UNIT TYPE | OR-27 |
| UNIT TYPE | OR-28 |
| UNIT TYPE | OR-29 |
| UNIT TYPE | OR-30 |
| UNIT TYPE | OR-31 |
| UNIT TYPE | OR-32 |
| UNIT TYPE | OR-33 |
| UNIT TYPE | OR-34 |
| UNIT TYPE | OR-35 |
| UNIT TYPE | OR-36 |
| UNIT TYPE | OR-37 |
| UNIT TYPE | OR-38 |
| UNIT TYPE | OR-39 |
| UNIT TYPE | OR-40 |
| UNIT TYPE | OR-41 |
| UNIT TYPE | OR-42 |
| UNIT TYPE | OR-43 |
| UNIT TYPE | OR-44 |
| UNIT TYPE | OR-45 |
| UNIT TYPE | OR-46 |
| UNIT TYPE | OR-47 |
| UNIT TYPE | OR-48 |
| UNIT TYPE | OR-49 |
| UNIT TYPE | OR-50 |
| UNIT TYPE | OR-51 |
| UNIT TYPE | OR-52 |
| UNIT TYPE | OR-53 |
| UNIT TYPE | OR-54 |
| UNIT TYPE | OR-55 |
| UNIT TYPE | OR-56 |
| UNIT TYPE | OR-57 |
| UNIT TYPE | OR-58 |
| UNIT TYPE | OR-59 |
| UNIT TYPE | OR-60 |
| UNIT TYPE | OR-61 |
| UNIT TYPE | OR-62 |
| UNIT TYPE | OR-63 |
| UNIT TYPE | OR-64 |
| UNIT TYPE | OR-65 |
| UNIT TYPE | OR-66 |
| UNIT TYPE | OR-67 |
| UNIT TYPE | OR-68 |
| UNIT TYPE | OR-69 |
| UNIT TYPE | OR-70 |
| UNIT TYPE | OR-71 |
| UNIT TYPE | OR-72 |
| UNIT TYPE | OR-73 |
| UNIT TYPE | OR-74 |
| UNIT TYPE | OR-75 |
| UNIT TYPE | OR-76 |
| UNIT TYPE | OR-77 |
| UNIT TYPE | OR-78 |
| UNIT TYPE | OR-79 |
| UNIT TYPE | OR-80 |
| UNIT TYPE | OR-81 |
| UNIT TYPE | OR-82 |
| UNIT TYPE | OR-83 |
| UNIT TYPE | OR-84 |
| UNIT TYPE | OR-85 |
| UNIT TYPE | OR-86 |
| UNIT TYPE | OR-87 |
| UNIT TYPE | OR-88 |
| UNIT TYPE | OR-89 |
| UNIT TYPE | OR-90 |
| UNIT TYPE | OR-91 |
| UNIT TYPE | OR-92 |
| UNIT TYPE | OR-93 |
| UNIT TYPE | OR-94 |
| UNIT TYPE | OR-95 |
| UNIT TYPE | OR-96 |
| UNIT TYPE | OR-97 |
| UNIT TYPE | OR-98 |
| UNIT TYPE | OR-99 |
| UNIT TYPE | OR-100 |

EXTERIOR AND INTERIOR COATING: 6 MM 10% ALUMINUM HANDLE LOCK SYSTEM GU 5 POINTS LOCKING MECHANISM HINGLE: PIVOT HINGES WITH ADJUSTABLE PINS

SCALE: 1:25

DATE: 10/10/2023

DESIGNER: EAST

PROJECT: G+1+R VILLA

ELEVATION, PLAN & SECTION OF ALUMINUM UNITS @ GROUND FLOOR.

Scope of Work: Pivot Door

HH029 – Al Jubail Island, Abu Dhabi



Project: HH029 – Al Jubail Island, Abu Dhabi

Consultant: POOL Engineering

Year: 2025

Scope of Work: Mashrabya & Metal Work

HH030 – LL037 Villa 22



Project: HH030 – LL037 Villa 22

Consultant: Luxland Landscaping

Year: 2025

Scope of Work: Vertical Garage Door

Iraqi Flavor Restaurant





Iraqi Flavor Restaurant



Iraqi Flavor Restaurant



Iraqi Flavor Restaurant

























Iraqi Flavor Restaurant

Iraqi Flavor Restaurant



HH-Metal – List of employees

| Employees | | 22 | |
|---|---|---|--|
| HOME HARMONY METAL BLACKSMITHING AND ALUMINIUM WORKS | | Employees | |
|  | VIRENDRA KUMAR KANNAUJIYA ALGU KANNAUJIYA Aluminium Fitter INDIA Code 2716007 Expiry Date 10-12-2025 |  | KOFFI GADESSEHOUN Aluminium Fitter TOGO Code 2716007 Expiry Date 24-12-2025 |
|  | SANTAL BHARTI RAM BHAGAT RAM Aluminium Fitter INDIA Code 2716007 Expiry Date 24-12-2025 |  | NAGINA PRASAD CHAUHAN RAM KISHUN CHAUHAN Aluminium Fitter INDIA Code 2716007 Expiry Date 24-12-2025 |
|  | SYED SALMAN SYED TAJUDDIN Sales Officer INDIA Code 2716007 Expiry Date 24-12-2025 |  | MOHAMMED YASIN SAYEDUL HAQUE Messenger BANGLADESH Code 2716007 Expiry Date 27-02-2026 |
|  | MOHD D H DIRIEH Design Manager JORDAN Code 2716007 Expiry Date 01-03-2026 |  | SATYENDRA KUMAR SUDAMA PRASAD Tile Layer INDIA Code 2716007 Expiry Date 19-05-2026 |
|  | MOHAMMED AWNI ABU ALHAEGAA Commercial Sales Representative PALESTINE Code 2716007 Expiry Date 11-06-2026 |  | VIJAYAKUMAR MAHIMAIDOSS MAHIMAIDOSS Aluminium Fitter INDIA Code 2716007 Expiry Date 18-06-2026 |
|  | ALHOUCINE HANANE Sales Officer MOROCCO Code 2716007 Expiry Date 08-07-2026 |  | MAHAMAD JUNEDESSARAHAMAD NISSARAHAMADDARJE Sheet Metal Worker INDIA Code 2716007 Expiry Date 31-07-2026 |
|  | DEEPAK SINGH NANDAN SINGH Aluminium Fitter INDIA Code 2716007 Expiry Date 28-09-2027 |  | HASSAN MOHAMED ABDELHAMID ATAIA Machine Tool Operator EGYPT Code 2716007 Expiry Date 30-09-2027 |
|  | GIBSON LETONA Aluminium Fabricator LYBERYA Code 2716007 Expiry Date 30-09-2027 |  | RAMESH CHAUDHARI RADHA KRISHNA CHAUDHARI Blacksmith INDIA Code 2716007 Expiry Date 16-10-2027 |

| | | | |
|---|---|---|---|
|  | LALLU BIND MUDARSHAN BIND Tile Layer INDIA Code 2716007 Expiry Date 16-10-2027 |  | AJAY KUMAR GUPTA LALMAN GUPTA Aluminium Fitter INDIA Code 2716007 Expiry Date 16-10-2027 |
|  | PINTU KUMAR CHAUDHARI NANDLAL CHAUDHARI Aluminium Fabricator INDIA Code 2716007 Expiry Date 22-10-2027 |  | KRISHNA CHAUDHARY CHHOTELAL CHAUDHARY Aluminium Fabricator INDIA Code 2716007 Expiry Date 22-10-2027 |
|  | SUHAIL SAINUDHEEN SAINUDHEEN Aluminium Fabricator INDIA Code 2716007 Expiry Date 24-10-2027 |  | DEEPAK RAMANAN PADMAVILASAM NANUPANICKER RAMANAN Welder INDIA Code 2716007 Expiry Date 25-10-2027 |

Our Machinery



Fiber Laser Machine



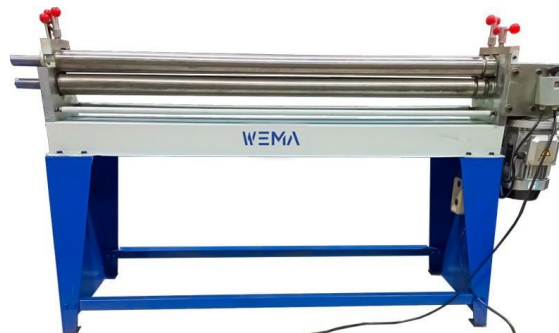
Hydraulic Bending Machine



Hydraulic CNC Angle Cutting Shearing



Drilling Milling Machine

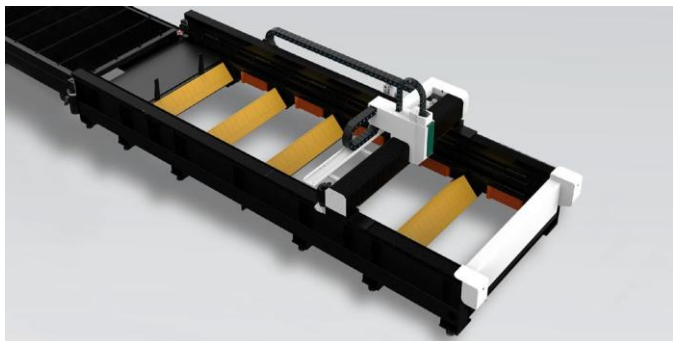


Roller Plate Rolling Machine



Hydraulic Section Bending Machine

Fiber Laser Machine (F6020 – 6000W)



Approved By - (Major Client's Developers)

**JUMEIRAH
ISLANDS**

ميدان
meydan

Jumeirah™



DAMAC

مجمع دبي
للاستثمار
Dubai Investments Park

Approved By - (Major Client's Contractors & Consultants)



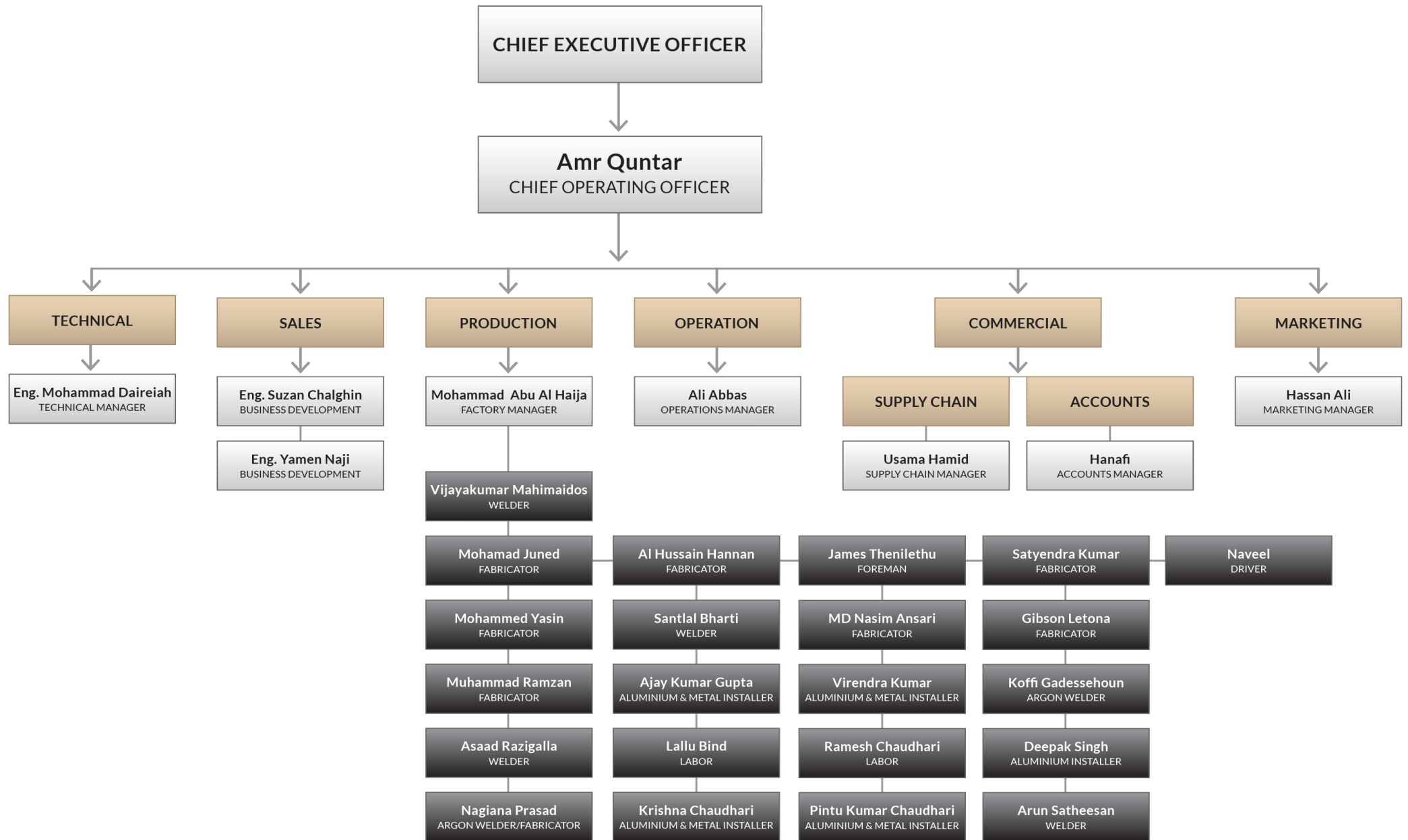
MIVIDO • FAKTUR



Approved By - (Major Client's Contractors & Consultants)



Organizational Chart



HOME HARMONY
METAL

BLACKSMITHING AND ALUMINIUM WORKS



050-8319882

هوم هارموني
ميتال

لأعمال الحدادة و الالسيوم

info@homeharmony.ae



HH-Metal Factory Address

**Block 02, Warehouse 17
Umm Dera, Umm Al Quwain
United Arab Emirates**

**+971 50 831 9882 | +971 4 261 9744
info@homeharmony.ae | hhmetal.ae**

HH-Metal Factory Address

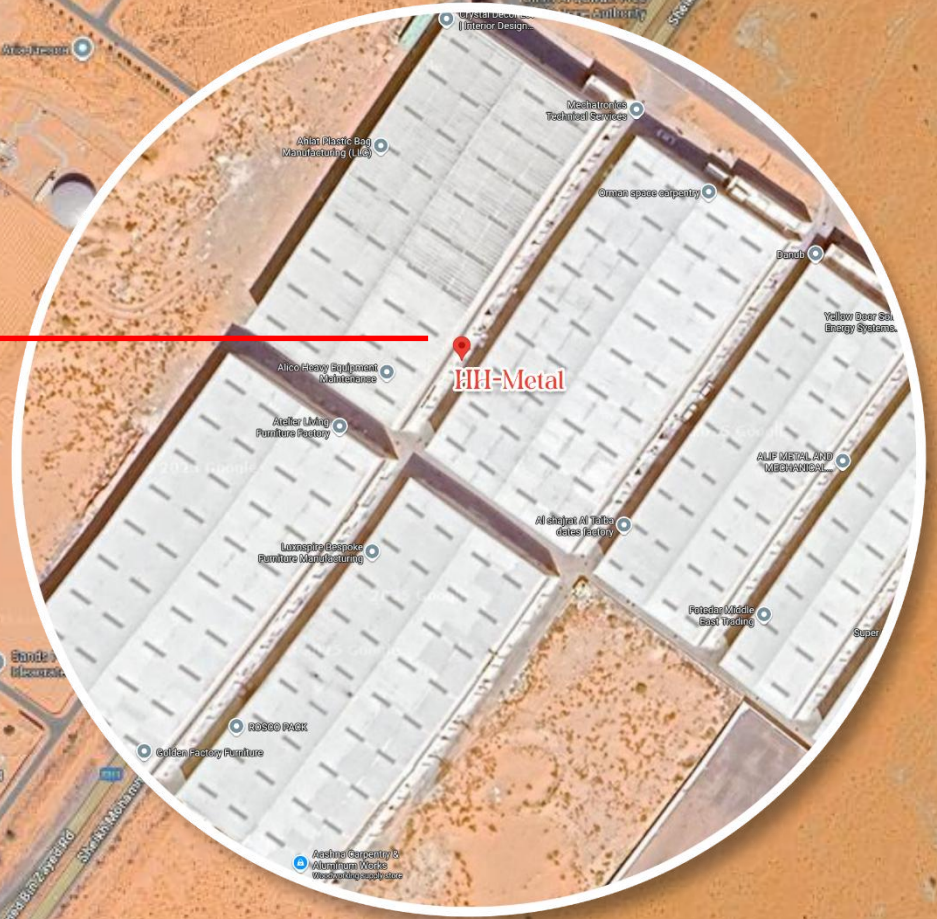
Block 02, Warehouse 17
Umm Dera, Umm Al Quwain
United Arab Emirates

+971 50 831 9882 | +971 4 261 9744
info@homeharmony.ae | hhmetal.ae

HH-Metal Factory Address

Block 02, Warehouse 17
Umm Dera, Umm Al Quwain
United Arab Emirates

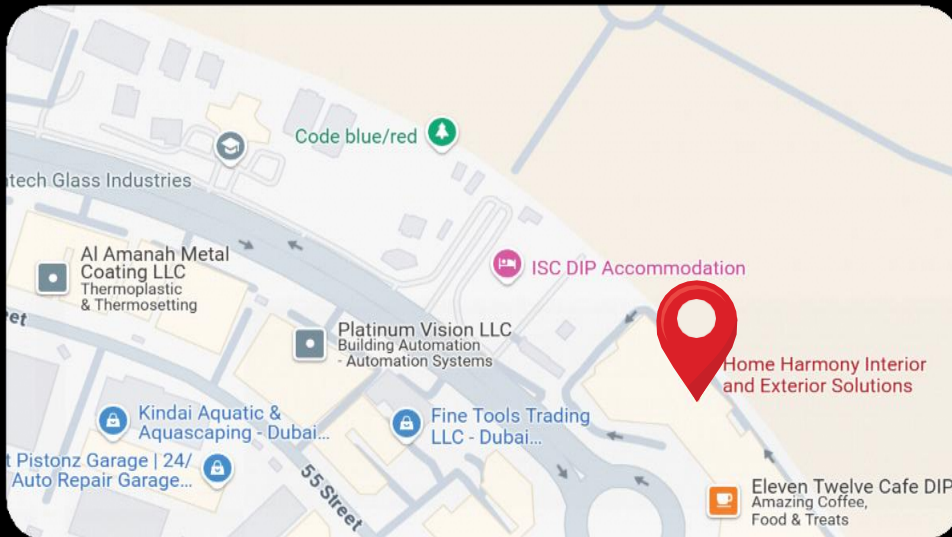
+971 50 831 9882 | +971 4 261 9744
info@homeharmony.ae | hhmetal.ae



HH Metal

BY HOME HARMONY

Office Location



*Office 21B, Zone 1, Ground Floor
Schon Business Park, Central Plaza
Dubai Investments Park 1, Dubai*

Factory Location



*HH-Metal, Block 02
WH 17, Umm Dera
Umm Al Quwain, U.A.E*



Amr Quntar

Chief Operating Officer (C.O.O)

Phone: +971 50 831 9882



Soon for Contact